

Datasheet for ABIN1319287
SCNM1 Protein (AA 1-230) (GST tag)



[Go to Product page](#)

1 Image

Overview

Quantity:	10 µg
Target:	SCNM1
Protein Characteristics:	AA 1-230
Origin:	Human
Source:	Wheat germ
Protein Type:	Recombinant
Purification tag / Conjugate:	This SCNM1 protein is labelled with GST tag.
Application:	ELISA, Western Blotting (WB), Affinity Purification (AP), Antibody Array (AA)

Product Details

Purpose:	SCNM1 (Human) Recombinant Protein (P01)
Sequence:	MSFKREGDDW SQLNVLKKRR VGDLLASYIP EDEALMLRDG RFACAICPHR PVLDTLAMLT AHRAGKKHLS SLQLFYGKKQ PGKERKQNPQ HQNELRREET KAEAPLLTQT RLITQSALHR APHYNSCCRK KYRPEAPGPS VSLSPMPPSE VKLQSGKISR EPEPAAGPQA EESATVSAPA PMSPTRRRAL DHYLTLRSSG WIPDGRGRWV KDENVEFSDS EEEPPDLPLD
Characteristics:	Human SCNM1 full-length ORF (AAH00264, 1 a.a. - 230 a.a.) recombinant protein with GST-tag at N-terminal.
Purification:	in vitro wheat germ expression system

Target Details

Target:	SCNM1
---------	-------

Target Details

Alternative Name:	SCNM1 (SCNM1 Products)
Background:	Full Gene Name: sodium channel modifier 1 Synonyms: MGC3180
Gene ID:	79005

Application Details

Application Notes:	Optimal working dilution should be determined by the investigator.
Comment:	Preparation method: in vitro, wheat germ expression system Product Quality tested by: 12.5% SDS-PAGE Stained with Coomassie Blue.
Restrictions:	For Research Use only

Handling

Buffer:	50 mM Tris-HCl, 10 mM reduced Glutathione, pH =8.0 in the elution buffer.
Handling Advice:	Aliquot to avoid repeated freezing and thawing.
Storage:	-80 °C
Storage Comment:	Best use within three months from the date of receipt of this protein.

Images

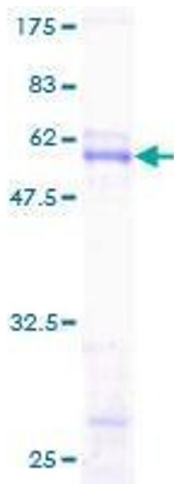


Image 1.