



[Go to Product page](#)

Datasheet for ABIN1319298
SCO2 Protein (AA 1-266) (GST tag)

1 Image

Overview

Quantity:	10 µg
Target:	SCO2
Protein Characteristics:	AA 1-266
Origin:	Human
Source:	Wheat germ
Protein Type:	Recombinant
Purification tag / Conjugate:	This SCO2 protein is labelled with GST tag.
Application:	Western Blotting (WB), ELISA, Affinity Purification (AP), Antibody Array (AA)

Product Details

Purpose:	SCO2 (Human) Recombinant Protein (P01)
Sequence:	MLLLTRSPTA WHRLSQLKPR VLPGLTGGQA LHLRSWLLSR QGPAETGGQG QPQGPGLRTR LLITGLFGAG LGGAWLALRA EKERLQQQKR TEALRQAAVG QGDFHLLDHR GRARCKADFR GQWVLMYFGF THCPDICPDE LEKLVQVVRQ LEAEPGLPPV QPVFITVDPE RDDVEAMARY VQDFHPRLLG LTGSTKQVAQ ASHSYRVVYN AGPKDEDQDY IVDHSIAIYL LNPDGLFTDY YGRSRSAEQI SDSVRRHMAA FRSVLS
Characteristics:	Human SCO2 full-length ORF (NP_005129.1, 1 a.a. - 266 a.a.) recombinant protein with GST-tag at N-terminal.
Purification:	in vitro wheat germ expression system

Target Details

Target:	SCO2
Alternative Name:	SCO2 (SCO2 Products)
Background:	Full Gene Name: SCO cytochrome oxidase deficient homolog 2 (yeast) Synonyms: MGC125823,MGC125825,SCO1L
Gene ID:	9997
NCBI Accession:	NM_005138
Pathways:	Transition Metal Ion Homeostasis , Warburg Effect

Application Details

Application Notes:	Optimal working dilution should be determined by the investigator.
Comment:	Preparation method: in vitro, wheat germ expression system Product Quality tested by: 12.5% SDS-PAGE Stained with Coomassie Blue.
Restrictions:	For Research Use only

Handling

Buffer:	50 mM Tris-HCl, 10 mM reduced Glutathione, pH =8.0 in the elution buffer.
Handling Advice:	Aliquot to avoid repeated freezing and thawing.
Storage:	-80 °C
Storage Comment:	Best use within three months from the date of receipt of this protein.

Images

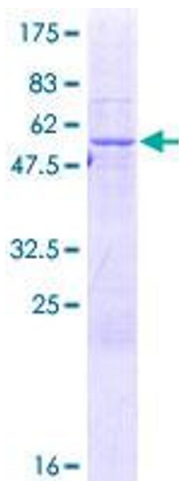


Image 1.