



[Go to Product page](#)

Datasheet for ABIN1319306

SCRN2 Protein (AA 1-425) (GST tag)

1 Image

Overview

Quantity:	10 µg
Target:	SCRN2
Protein Characteristics:	AA 1-425
Origin:	Human
Source:	Wheat germ
Protein Type:	Recombinant
Purification tag / Conjugate:	This SCRN2 protein is labelled with GST tag.
Application:	ELISA, Western Blotting (WB), Affinity Purification (AP), Antibody Array (AA)

Product Details

Purpose:	SCRN2 (Human) Recombinant Protein (P01)
Sequence:	MASSSPDSPC SCDCFVSVPP ASAIPAVIFA KNSDRPRDEV QEWFVVPAGT HTPGSRLQCT YIEVEQVSKT HAVILSRPSW LWGAEMGANE HGVCIGNEAV WTREPVGEGE ALLGMDLLRL ALERSSSAQE ALHVITGLLE HYGQGGNCLE DAAPFSYHST FLLADRTEAW VLETAGRLWA AQRIQEGARN ISNQLSIGTD ISAQHPELRT HAQAKGWWDG QGAFDFAQIF SLTQQPVRME AAKARFQAGR ELLRQRQGGI TAEVMMGILR DKESGICMDS GGFRTTASMV SVLPQDPTQP CVHFLTATPD PSRSVFKPFI FGVGVAQAPQ VLSPTFGAQD PVRTLPRFQT QVDRRHLYR GHQAALGLME RDQDRGQQLQ QKQQDLEQEG LEATQGLLAG EWAPPLWELG GLFQAFVKRE SQAYA
Characteristics:	Human SCRN2 full-length ORF (NP_612364.1, 1 a.a. - 425 a.a.) recombinant protein with GST-tag at N-terminal.

Product Details

Purification: in vitro wheat germ expression system

Target Details

Target: SCR2

Alternative Name: SCR2 ([SCR2 Products](#))

Background: Full Gene Name: secernin 2
Synonyms: Ses2

Gene ID: 90507

NCBI Accession: [NM_138355](#)

Application Details

Application Notes: Optimal working dilution should be determined by the investigator.

Comment: Preparation method: in vitro, wheat germ expression system
Product Quality tested by: 12.5% SDS-PAGE Stained with Coomassie Blue.

Restrictions: For Research Use only

Handling

Buffer: 50 mM Tris-HCl, 10 mM reduced Glutathione, pH =8.0 in the elution buffer.

Handling Advice: Aliquot to avoid repeated freezing and thawing.

Storage: -80 °C

Storage Comment: Best use within three months from the date of receipt of this protein.

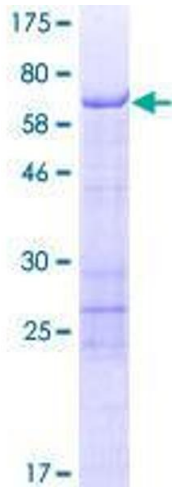


Image 1.