

Datasheet for ABIN1319335

Syndecan 1 Protein (SDC1) (AA 1-310) (GST tag)



[Go to Product page](#)

1 Image

Overview

Quantity:	10 µg
Target:	Syndecan 1 (SDC1)
Protein Characteristics:	AA 1-310
Origin:	Human
Source:	Wheat germ
Protein Type:	Recombinant
Purification tag / Conjugate:	This Syndecan 1 protein is labelled with GST tag.
Application:	Western Blotting (WB), ELISA, Affinity Purification (AP), Antibody Array (AA)

Product Details

Purpose:	SDC1 (Human) Recombinant Protein (P01)
Sequence:	MRRAALWLWL CALALSLQPA LPQIVATNLP PEDQDGSDD SDNFSGSGAG ALQDITLSQQ TPSTWKDTQL LTAIPTSPEP TGLEATAAST STLPAGEGPK EGEAVVLPEV EPGLTAREQE ATPRPRETTQ LPTTHQASTT TATTAQEPAT SHPHRDMQPG HHETSTPAGP SQADLHTPHT EDGGPSATER AAEDGASSQL PAAEGSGEQD FTFETSGENT AVVAVEPDRR NQSPVDQGAT GASQGLLDRK EVLGGVIAGG LVGLIFAVCL VGFMLYRMKK KDEGSYSLEE PKQANGGAYQ KPTKQEEFYA
Characteristics:	Human SDC1 full-length ORF (NP_001006947.1, 1 a.a. - 310 a.a.) recombinant protein with GST-tag at N-terminal.
Purification:	in vitro wheat germ expression system

Target Details

Target:	Syndecan 1 (SDC1)
Alternative Name:	SDC1 (SDC1 Products)
Background:	Full Gene Name: syndecan 1 Synonyms: CD138,SDC,SYND1,syndecan
Gene ID:	6382
NCBI Accession:	NM_001006946
Pathways:	Glycosaminoglycan Metabolic Process , Regulation of Muscle Cell Differentiation , Skeletal Muscle Fiber Development , Lipid Metabolism

Application Details

Application Notes:	Optimal working dilution should be determined by the investigator.
Comment:	Preparation method: in vitro, wheat germ expression system Product Quality tested by: 12.5% SDS-PAGE Stained with Coomassie Blue.
Restrictions:	For Research Use only

Handling

Buffer:	50 mM Tris-HCl, 10 mM reduced Glutathione, pH =8.0 in the elution buffer.
Handling Advice:	Aliquot to avoid repeated freezing and thawing.
Storage:	-80 °C
Storage Comment:	Best use within three months from the date of receipt of this protein.

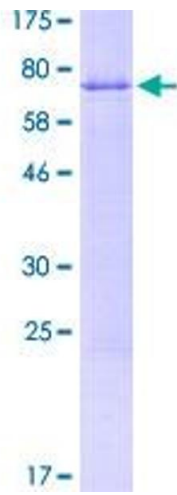


Image 1.