

Datasheet for ABIN1319365
SDHB Protein (AA 1-280) (GST tag)



[Go to Product page](#)

1 Image

Overview

Quantity:	10 µg
Target:	SDHB
Protein Characteristics:	AA 1-280
Origin:	Human
Source:	Wheat germ
Protein Type:	Recombinant
Purification tag / Conjugate:	This SDHB protein is labelled with GST tag.
Application:	Western Blotting (WB), ELISA, Affinity Purification (AP), Antibody Array (AA)

Product Details

Purpose:	SDHB (Human) Recombinant Protein (P01)
Sequence:	MAAVVALSLR RRLPATTLLGG ACLQASRGAQ TAAATAPRIK KFAIYRWDPD KAGDKPHMQT YEVDLNKCGP MVLDAIKIK NEVDSTLTFR RSCREGICGS CAMNINGGNT LACTRRIDTN LNKVKSIYPL PHMYVIKDLV PDLSNFYAQY KSIEPYLKKK DESQEGKQQY LQSIEEREKL DGLYECILCA CCSTSCPSYW WNGDKYLGPA VLMQAYRWMI DSRDDFTEER LAKLQDPFSL YRCHTIMNCT RTCPKGLNPG KAIAEIKKMM ATYKEKKASV
Characteristics:	Human SDHB full-length ORF (NP_002991.2, 1 a.a. - 280 a.a.) recombinant protein with GST-tag at N-terminal.
Purification:	in vitro wheat germ expression system

Target Details

Target:	SDHB
Alternative Name:	SDHB (SDHB Products)
Background:	Full Gene Name: succinate dehydrogenase complex, subunit B, iron sulfur (Ip) Synonyms: FLJ92337,IP,PGL4,SDH,SDH1,SDHIP
Gene ID:	6390
NCBI Accession:	NM_003000

Application Details

Application Notes:	Optimal working dilution should be determined by the investigator.
Comment:	Preparation method: in vitro, wheat germ expression system Product Quality tested by: 12.5% SDS-PAGE Stained with Coomassie Blue.
Restrictions:	For Research Use only

Handling

Buffer:	50 mM Tris-HCl, 10 mM reduced Glutathione, pH =8.0 in the elution buffer.
Handling Advice:	Aliquot to avoid repeated freezing and thawing.
Storage:	-80 °C
Storage Comment:	Best use within three months from the date of receipt of this protein.

Images

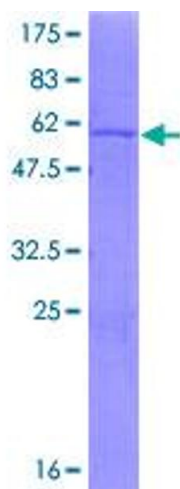


Image 1.