



[Go to Product page](#)

Datasheet for ABIN1319371

## SDHD Protein (AA 57-159) (GST tag)

### 1 Image

#### Overview

Quantity:	10 µg
Target:	SDHD
Protein Characteristics:	AA 57-159
Origin:	Human
Source:	Wheat germ
Protein Type:	Recombinant
Purification tag / Conjugate:	This SDHD protein is labelled with GST tag.
Application:	Western Blotting (WB), ELISA, Affinity Purification (AP), Antibody Array (AA)

#### Product Details

Purpose:	SDHD (Human) Recombinant Protein (Q01)
Sequence:	SGSKAASLHW TSERVSVLL LGLLPAAYLN PCSAMDYSLA AALTLHGHWG LGQVVDYVH GDALQKAACA GLLALSALTF AGLCYFNYHD VGICKAVAML WKL
Characteristics:	Human SDHD partial ORF ( AAH09574, 57 a.a. - 159 a.a.) recombinant protein with GST-tag at N-terminal.
Purification:	in vitro wheat germ expression system

#### Target Details

Target:	SDHD
Alternative Name:	SDHD ( <a href="#">SDHD Products</a> )

## Target Details

Background:	Full Gene Name: succinate dehydrogenase complex, subunit D, integral membrane protein Synonyms: CBT1,PGL,PGL1,SDH4
Gene ID:	6392

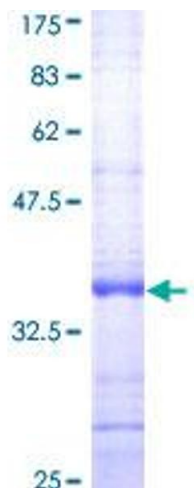
## Application Details

Application Notes:	Optimal working dilution should be determined by the investigator.
Comment:	Preparation method: in vitro, wheat germ expression system Product Quality tested by: 12.5% SDS-PAGE Stained with Coomassie Blue.
Restrictions:	For Research Use only

## Handling

Buffer:	50 mM Tris-HCl, 10 mM reduced Glutathione, pH =8.0 in the elution buffer.
Handling Advice:	Aliquot to avoid repeated freezing and thawing.
Storage:	-80 °C
Storage Comment:	Best use within three months from the date of receipt of this protein.

## Images



**Image 1.**