

Datasheet for ABIN1319373
SDPR Protein (AA 1-425) (GST tag)



[Go to Product page](#)

1 Image

Overview

Quantity:	10 µg
Target:	SDPR
Protein Characteristics:	AA 1-425
Origin:	Human
Source:	Wheat germ
Protein Type:	Recombinant
Purification tag / Conjugate:	This SDPR protein is labelled with GST tag.
Application:	ELISA, Western Blotting (WB), Affinity Purification (AP), Antibody Array (AA)

Product Details

Purpose:	SDPR (Human) Recombinant Protein (P01)
Sequence:	MGEDAAQAEK FQHPGSDMRQ EKPSSPSPMP SSTPSPSLNL GNTEEAIRDN SQVNAVTVLT LLDKLVNMLD AVQENQHKME QRQISLEGSV KGIQNDLTKL SKYQASTSNT VSKLLEKSRK VSAHTRAVKE RMDRQCAQVK RLENNHAQLL RRNHFKVLIF QEENEIPASV FVKQPVSGAV EGKEELPDEN KSLEETLHTV DLSSDDDLPH DEEALEDSAE EKVEESRAEK IKRSSLKKVD SLKKAFSRQN IEKKMNKLGK KIVSVERREK IKKSLTSNHQ KISSGKSSPF KVSPLTFGRK KVREGESHAE NETKSEDLPS SEQMPNDQEE ESFAEGHSEA SLASALVEGE IAEEAAEKAT SRGSNSGMDS NIDLTIVEDE EEESVALEQA QKVRYEGSYA LTSEEAEERSD GDPVQPAVLQ VHQTS
Characteristics:	Human SDPR full-length ORF (NP_004648.1, 1 a.a. - 425 a.a.) recombinant protein with GST-tag at N-terminal.
Purification:	in vitro wheat germ expression system

Target Details

Target:	SDPR
Alternative Name:	SDPR (SDPR Products)
Background:	Full Gene Name: serum deprivation response (phosphatidylserine binding protein) Synonyms: PS-p68,SDR
Gene ID:	8436
NCBI Accession:	NM_004657

Application Details

Application Notes:	Optimal working dilution should be determined by the investigator.
Comment:	Preparation method: in vitro, wheat germ expression system Product Quality tested by: 12.5% SDS-PAGE Stained with Coomassie Blue.
Restrictions:	For Research Use only

Handling

Buffer:	50 mM Tris-HCl, 10 mM reduced Glutathione, pH =8.0 in the elution buffer.
Handling Advice:	Aliquot to avoid repeated freezing and thawing.
Storage:	-80 °C
Storage Comment:	Best use within three months from the date of receipt of this protein.

Images

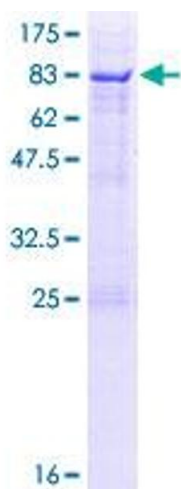


Image 1.