



[Go to Product page](#)

Datasheet for ABIN1319379

SDR42E1 Protein (AA 1-383) (GST tag)

1 Image

Overview

Quantity:	10 µg
Target:	SDR42E1
Protein Characteristics:	AA 1-383
Origin:	Human
Source:	Wheat germ
Protein Type:	Recombinant
Purification tag / Conjugate:	This SDR42E1 protein is labelled with GST tag.
Application:	ELISA, Western Blotting (WB), Affinity Purification (AP), Antibody Array (AA)

Product Details

Purpose:	HSPC105 (Human) Recombinant Protein (P01)
Sequence:	MDPKRSQKES VLITGGSGYF GFRLGCALNQ NGVHVILFDI SSPAQTIPEG IKFIQGDIRH LSDVEKAFQD ADVTCVFHIA SYGMSGREQL NRNLIKEVNV RGTDNILQVC QRRRVPRLVY TSTFNVIFGG QVIRNGDESL PYLPLHLHPD HYSRTKSIAE QKVLEANATP LDRGDGVLRT CALRPAGIYG PGEQRHLPRI VSYIEKGLFK FVYGDPRSLV EHVHVDNLVQ AHILASEALR ADKGHIASGQ PYFISDGRP VNNFEFFRPLV EGLGYTFPST RLPLTLVYCF AFLTEMVHFI LGRLYNFQPF LTRTEVYKTG VTHYFSLEKA KKELGYKAQP FDLQEAVEWF KAHGHGRSSG SRDSECFVWD GLLVFLIIA VLM
Characteristics:	Human HSPC105 full-length ORF (NP_660151.1, 1 a.a. - 383 a.a.) recombinant protein with GST-tag at N-terminal.
Purification:	in vitro wheat germ expression system

Target Details

Target:	SDR42E1
Alternative Name:	SDR42E1 (SDR42E1 Products)
Background:	Full Gene Name: short chain dehydrogenase/reductase family 42E, member 1 Synonyms: HSPC105
Gene ID:	93517

Application Details

Application Notes:	Optimal working dilution should be determined by the investigator.
Comment:	Preparation method: in vitro, wheat germ expression system Product Quality tested by: 12.5% SDS-PAGE Stained with Coomassie Blue.
Restrictions:	For Research Use only

Handling

Buffer:	50 mM Tris-HCl, 10 mM reduced Glutathione, pH =8.0 in the elution buffer.
Handling Advice:	Aliquot to avoid repeated freezing and thawing.
Storage:	-80 °C
Storage Comment:	Best use within three months from the date of receipt of this protein.

Images

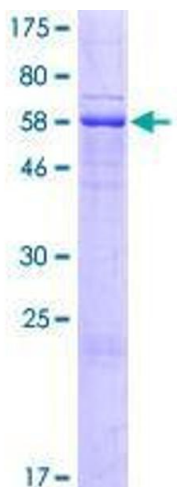


Image 1.