

Datasheet for ABIN1319394
SEC14L2 Protein (AA 1-392) (GST tag)



[Go to Product page](#)

1 Image

Overview

Quantity:	10 µg
Target:	SEC14L2
Protein Characteristics:	AA 1-392
Origin:	Human
Source:	Wheat germ
Protein Type:	Recombinant
Purification tag / Conjugate:	This SEC14L2 protein is labelled with GST tag.
Application:	ELISA, Western Blotting (WB), Affinity Purification (AP), Antibody Array (AA)

Product Details

Purpose:	SEC14L2 (Human) Recombinant Protein (P01)
Sequence:	MSGRVGDLSP RQKEALAKFR ENVQDVLPAL PNPDDYFLLR WLRARSFDLQ KSEAMLRKHV EFRKQKDIDN IISWQPPEVI QQYLSGGMCG YDLDGCPVWY DIIGPLDAKG LLFSASKQDL LRTKMRECEL LLQECAHQTT KLGRKVETIT IYDCEGLGL KHLWKPAVEA YGEFLCMFEE NYPETLKRLF VVKAPKLPV AYNLIKPFSL EDTRKKIMVL GANWKEVLLK HISPDQVPVE YGGTMTDPDG NPKCKSKINY GGDIPRKYVY RDQVKQYEH SVQISRGSSH QVEYEILFPG CVLRWQFMSD GADVGFGLF KTKMGERQRA GEMTEVLPNQ RYNShLVPED GTLTCSDPGI CKYLCLGNAL KPHVQLSACE VPLPPWIFGS EC
Characteristics:	Human SEC14L2 full-length ORF (AAH58915.1, 1 a.a. - 392 a.a.) recombinant protein with GST-tag at N-terminal.
Purification:	in vitro wheat germ expression system

Target Details

Target:	SEC14L2
Alternative Name:	SEC14L2 (SEC14L2 Products)
Background:	Full Gene Name: SEC14-like 2 (S. cerevisiae) Synonyms: C22orf6,KIAA1186,KIAA1658,MGC65053,SPF,TAP,TAP1
Gene ID:	23541

Application Details

Application Notes:	Optimal working dilution should be determined by the investigator.
Comment:	Preparation method: in vitro, wheat germ expression system Product Quality tested by: 12.5% SDS-PAGE Stained with Coomassie Blue.
Restrictions:	For Research Use only

Handling

Buffer:	50 mM Tris-HCl, 10 mM reduced Glutathione, pH =8.0 in the elution buffer.
Handling Advice:	Aliquot to avoid repeated freezing and thawing.
Storage:	-80 °C
Storage Comment:	Best use within three months from the date of receipt of this protein.

Images

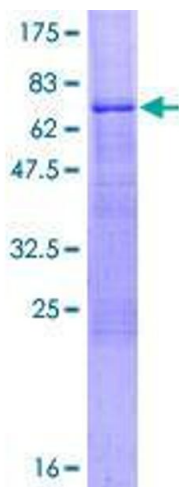


Image 1.