



[Go to Product page](#)

Datasheet for ABIN1319407

SEC22C Protein (AA 1-303) (GST tag)

1 Image

Overview

Quantity:	10 µg
Target:	SEC22C
Protein Characteristics:	AA 1-303
Origin:	Human
Source:	Wheat germ
Protein Type:	Recombinant
Purification tag / Conjugate:	This SEC22C protein is labelled with GST tag.
Application:	ELISA, Western Blotting (WB), Affinity Purification (AP), Antibody Array (AA)

Product Details

Purpose:	SEC22C (Human) Recombinant Protein (P01)
Sequence:	MSVIFFACVV RVRDGLPLSA STDFYHTQDF LEWRRRLKSL ALRLAQYPGR GSAEGCDFSI HFSSFGDVAC MAICSCQCPA AMAFCFLETL WVEFTASYDT TCIGLASRPY AFLEFDSIIQ KVKWHFNYVS SSQMECSLEK IQEELKLQPP AVLTLEDTDV ANGVMNGHTP MHLEPAPNFR MEPV TALGIL SLILNIMCAA LNLIRGVHLA EHSLQVAHEE IGNILAF LVP FVACIFQCYL YLFYSPARTM KVVLM LLLFIC LGNMYLHGLR NLWQILFHIG VAF LSSYQIL TRQLQE KQSD CGV
Characteristics:	Human SEC22C full-length ORF (NP_116752.1, 1 a.a. - 303 a.a.) recombinant protein with GST-tag at N-terminal.
Purification:	in vitro wheat germ expression system

Target Details

Target:	SEC22C
Alternative Name:	SEC22C (SEC22C Products)
Background:	Full Gene Name: SEC22 vesicle trafficking protein homolog C (<i>S. cerevisiae</i>) Synonyms: DKFZp761F2321,MGC13261,MGC5373,SEC22L3
Gene ID:	9117
NCBI Accession:	NM_032970

Application Details

Application Notes:	Optimal working dilution should be determined by the investigator.
Comment:	Preparation method: in vitro, wheat germ expression system Product Quality tested by: 12.5% SDS-PAGE Stained with Coomassie Blue.
Restrictions:	For Research Use only

Handling

Buffer:	50 mM Tris-HCl, 10 mM reduced Glutathione, pH =8.0 in the elution buffer.
Handling Advice:	Aliquot to avoid repeated freezing and thawing.
Storage:	-80 °C
Storage Comment:	Best use within three months from the date of receipt of this protein.

Images

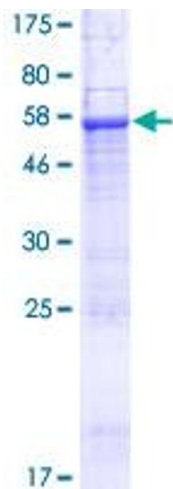


Image 1.