



[Go to Product page](#)

Datasheet for ABIN1319414

SEC23IP Protein (AA 1-1000) (GST tag)

1 Image

Overview

Quantity:	10 µg
Target:	SEC23IP
Protein Characteristics:	AA 1-1000
Origin:	Human
Source:	Wheat germ
Protein Type:	Recombinant
Purification tag / Conjugate:	This SEC23IP protein is labelled with GST tag.
Application:	ELISA, Western Blotting (WB), Affinity Purification (AP), Antibody Array (AA)

Product Details

Purpose:	SEC23IP (Human) Recombinant Protein (P02)
Sequence:	<p>MAERKPNGGS GGASTSSSGT NLLFSSSATE FSFNVFPFIPV TQASASPASL LLPGEDSTDV GEEDSFLGQT SIHTSAPQTF SYFSQVSSSS DPGNIGQSP LTTAATSVGQ SGFPKPLTAL PFTTGSQDVS NAFSPSISKA QPGAPPSSLM GINSYLPSQP SSLPPSYFGN QPQGIPQPGY NPYRHTPGSS RANPYIAPPQ LQQCQTPGPP AHPPPSGPPV QMYQMPPGSL PPVPSSVQSP AQQQVPARPG APSVQVPSPF LLQNQYEPVQ PHWFYCKEVE YKQLWMPFSV FDSLNLLEEIY NSVQPDPEV VLGTDGGRYD VYLYDRIRKA AYWEEPAEV RRCTWFYKGD TDSRFIPYTE EFSEKLEAEY KKAHTTNQWH RRLEFPSET IVMHNPVIV QFQPSSVPDE WGTQDQGQTR PRVVKRGIDD NLDEIPDGEM PQVDHLVFFV HGIGPVCDLR FRSIIECVDD FRVSLKLLR THFKSLDDG KVSVEFLPV HWHSSLGDA TGVDRNIKI TLPSIGRFRH FTNETLLDIL FYNSTYCQT IVEKVGMEIN HLHALFMSRN PDFKGGVSA GHSLGSLILF DILSNQKDLN LSKCPGPLAV ANGVVKQLHF QEKQMPEEPK LTLDESYDLV VENKEVLTQ ETLEALSLSLSE</p>

Product Details

YFSTFEKEKI DMESLLMCTV DDLKEMGIPL GPRKKIANFV EHKAALKKKA ASEKKAVAAT
STKGQEQAQ KTKDMASLPS ESNEPKRKLP VGACVSSVCV NYESFEVGAG QVSVAYNSLD
FEPEIFFALG SPIAMFLTIR GVDRIDENYS LPTCKGFFNI YHPLDPVAYR LPMIVPDL
LKAVLIPHHK GRKRLHLELK ESLSRMGSDL KQGFISLKS AWQTLNEFAR AHTSSTQLQE
ELEKVANQIK EEEEEQVVEA EKVVESPDFS KDEDYLGKVG MLNGGRRIDY VLQEKPIESF
NEYLFALQSH LCYWESEDTA LLLLKEIYRT MNISPEQPQH

Characteristics: Human SEC23IP full-length ORF (NP_009121.1, 1 a.a. - 1000 a.a.) recombinant protein with GST-tag at N-terminal.

Purification: in vitro wheat germ expression system

Target Details

Target: SEC23IP

Alternative Name: SEC23IP ([SEC23IP Products](#))

Background: Full Gene Name: SEC23 interacting protein
Synonyms: MSTP053,P125

Gene ID: 11196

NCBI Accession: [NM_007190](#)

Application Details

Application Notes: Optimal working dilution should be determined by the investigator.

Comment: Preparation method: in vitro, wheat germ expression system
Product Quality tested by: 12.5% SDS-PAGE Stained with Coomassie Blue.

Restrictions: For Research Use only

Handling

Buffer: 50 mM Tris-HCl, 10 mM reduced Glutathione, pH =8.0 in the elution buffer.

Handling Advice: Aliquot to avoid repeated freezing and thawing.

Storage: -80 °C

Storage Comment: Best use within three months from the date of receipt of this protein.

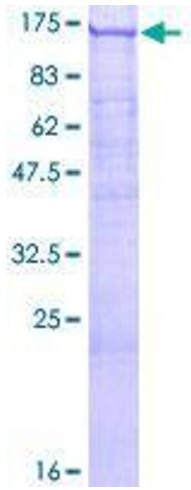


Image 1.