

Datasheet for ABIN1319422  
**SEC31A Protein (AA 1-509) (GST tag)**



[Go to Product page](#)

1 Image

Overview

Quantity:	10 µg
Target:	SEC31A
Protein Characteristics:	AA 1-509
Origin:	Human
Source:	Wheat germ
Protein Type:	Recombinant
Purification tag / Conjugate:	This SEC31A protein is labelled with GST tag.
Application:	ELISA, Western Blotting (WB), Affinity Purification (AP), Antibody Array (AA)

Product Details

Purpose:	SEC31A (Human) Recombinant Protein (P01)
Sequence:	MKLKEVDRTA MQAWSPAQNH PIYLATGTSA QQLDATFSTN ASLEIFELDL SDPSLDMKSC ATFSSSHRYH KLIWGPYKMD SKGDVSGVLI AGGENGNIL YDPSKIIAGD KEVVIAQNDK HTGPVRALDV NIFQTNLVA GANESEIYW DLNNFATPMT PGAKTQPPED ISCIAWNRQV QHILASASPS GRATVWDLRK NEPIIKVSDH SNRMHCSGLA WHPDVATQMV LASEDDRLLPV IQMWDLRFAS SPLRVLENHA RGILAIASWM ADPELLLSCG KDAKILCSNP NTGEVLYELP TNTQWCFDIQ WCPRNPAVLS AASFDGRISV YSIMGGSTDG LRQKQVDKLS SSFGNLDPPFG TGQPLPPLQI PQQTAQHSIV LPLKKPPKWI RRPVGASF SF GGKLVTFENV RMPSHQGAEQ QQQQHVFIS QVVTEKEFLS RSDQLQQAVQ SQGFINYCQK KIDASQTEFE KNVWSFLKVN FEDDSRGKYL ELLGYRKEDL GKKVNFWE S
Characteristics:	Human SEC31A full-length ORF ( AAH47883.1, 1 a.a. - 509 a.a.) recombinant protein with GST-tag at N-terminal.

## Product Details

---

Purification: in vitro wheat germ expression system

## Target Details

---

Target: SEC31A

Alternative Name: SEC31A ([SEC31A Products](#))

Background: Full Gene Name: SEC31 homolog A (S. cerevisiae)  
Synonyms:  
ABP125,ABP130,DKFZp686N07171,HSPC275,HSPC334,KIAA0905,MGC90305,SEC31L1

Gene ID: 22872

Pathways: [ER-Nucleus Signaling](#)

## Application Details

---

Application Notes: Optimal working dilution should be determined by the investigator.

Comment: Preparation method: in vitro, wheat germ expression system  
Product Quality tested by: 12.5% SDS-PAGE Stained with Coomassie Blue.

Restrictions: For Research Use only

## Handling

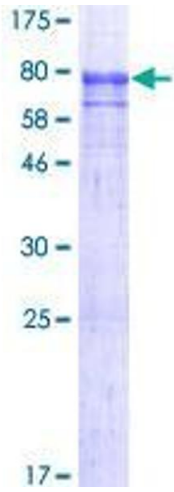
---

Buffer: 50 mM Tris-HCl, 10 mM reduced Glutathione, pH =8.0 in the elution buffer.

Handling Advice: Aliquot to avoid repeated freezing and thawing.

Storage: -80 °C

Storage Comment: Best use within three months from the date of receipt of this protein.



**Image 1.**