



[Go to Product page](#)

Datasheet for ABIN1319424

SEC31B Protein (AA 1-348) (GST tag)

1 Image

Overview

Quantity:	10 µg
Target:	SEC31B
Protein Characteristics:	AA 1-348
Origin:	Human
Source:	Wheat germ
Protein Type:	Recombinant
Purification tag / Conjugate:	This SEC31B protein is labelled with GST tag.
Application:	ELISA, Western Blotting (WB), Affinity Purification (AP), Antibody Array (AA)

Product Details

Purpose:	SEC31B (Human) Recombinant Protein (P01)
Sequence:	MKLKELERPA VQAWSPASQY PLYLATGTSA QQLDSSFSTN GTLEIFEVDF RDPSLDLKHR GVLSALSRFH KLVWGSFGSG LLESSGVIAG GGDNGMLILY NVTHILSSGK EPVIAQKQKH TGAVRALDFN PFQGNLLASG ASDSEIFIWD LNINLVPM TL GSKSQPPEDI KALSWNRQAQ HILSSAHP SG KAVVWDLRKN EPIIKVSDHS NRMHCSGLAW HPDIATQLVL CSEDDR LPVI QLWDLRFASS PLKVLESHSR GILSVSWSQA DAELLTSAK DSQILCRNLG SSEVVYKLPT QSSWC F DVQW CPRDPSVFSA ASFNGWISLY AVMGRSWEVQ HMRQADKV
Characteristics:	Human SEC31B full-length ORF (AAH44569.1, 1 a.a. - 348 a.a.) recombinant protein with GST-tag at N-terminal.
Purification:	in vitro wheat germ expression system

Target Details

Target:	SEC31B
Alternative Name:	SEC31B (SEC31B Products)
Background:	Full Gene Name: SEC31 homolog B (<i>S. cerevisiae</i>) Synonyms: DKFZp434M183,SEC31B-1,SEC31L2
Gene ID:	25956

Application Details

Application Notes:	Optimal working dilution should be determined by the investigator.
Comment:	Preparation method: in vitro, wheat germ expression system Product Quality tested by: 12.5% SDS-PAGE Stained with Coomassie Blue.
Restrictions:	For Research Use only

Handling

Buffer:	50 mM Tris-HCl, 10 mM reduced Glutathione, pH =8.0 in the elution buffer.
Handling Advice:	Aliquot to avoid repeated freezing and thawing.
Storage:	-80 °C
Storage Comment:	Best use within three months from the date of receipt of this protein.

Images

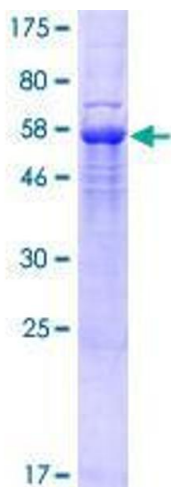


Image 1.