

Datasheet for ABIN1319429  
**SEC61B Protein (AA 1-96) (GST tag)**



[Go to Product page](#)

1 Image

## Overview

Quantity:	10 µg
Target:	SEC61B
Protein Characteristics:	AA 1-96
Origin:	Human
Source:	Wheat germ
Protein Type:	Recombinant
Purification tag / Conjugate:	This SEC61B protein is labelled with GST tag.
Application:	ELISA, Western Blotting (WB), Affinity Purification (AP), Antibody Array (AA)

## Product Details

Purpose:	SEC61B (Human) Recombinant Protein (P01)
Sequence:	MPGPTPSGTN VGSSGRSPSK AVAARAAGST VRQRKNASCG TRSAGRRTTSA GTGGMWRFYT EDSPGLKVGP VPVLMSELLF IASVFMLHIW GKYTRS
Characteristics:	Human SEC61B full-length ORF ( NP_006799.1, 1 a.a. - 96 a.a.) recombinant protein with GST-tag at N-terminal.
Purification:	in vitro wheat germ expression system

## Target Details

Target:	SEC61B
Alternative Name:	SEC61B ( <a href="#">SEC61B Products</a> )

## Target Details

Background: Gene: Sec61 beta subunit

Gene ID: 10952

NCBI Accession: [NM\\_006808](#)

Pathways: [Protein targeting to Nucleus](#)

## Application Details

Application Notes: Optimal working dilution should be determined by the investigator.

Restrictions: For Research Use only

## Handling

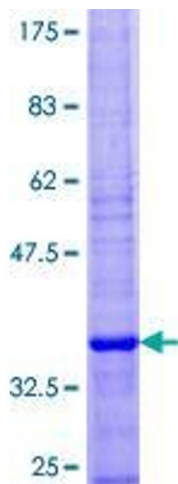
Buffer: 50 mM Tris-HCl, 10 mM reduced Glutathione, pH =8.0 in the elution buffer.

Handling Advice: Aliquot to avoid repeated freezing and thawing.

Storage: -80 °C

Storage Comment: Best use within three months from the date of receipt of this protein.

## Images



**Image 1.**