



[Go to Product page](#)

Datasheet for ABIN1319457

Selenoprotein S Protein (SELS) (AA 1-189) (GST tag)

1 Image

Overview

Quantity:	10 µg
Target:	Selenoprotein S (SELS)
Protein Characteristics:	AA 1-189
Origin:	Human
Source:	Wheat germ
Protein Type:	Recombinant
Purification tag / Conjugate:	This Selenoprotein S protein is labelled with GST tag.
Application:	ELISA, Western Blotting (WB), Affinity Purification (AP), Antibody Array (AA)

Product Details

Purpose:	SELS (Human) Recombinant Protein (P01)
Sequence:	MERQEESLSA RPALETEGLR FLHTTVGSLI ATYGWYIVFS CILLYVVFQK LSARLRALRQ RQLDRAAAAV EPDVVVKRQE ALAAARLKMV EELNAQVEKH KEKIKQLEEE KRRQKIEVVD SMQEGKSYKG NAKKPQEEDS PGPSTSSVLK RKSDRKPLRG GGYNPLSGEG GGACSWRPGR RGPSSGG*G
Characteristics:	Human SELS full-length ORF (AAH05840, 1 a.a. - 189 a.a.) recombinant protein with GST-tag at N-terminal.
Purification:	in vitro wheat germ expression system

Target Details

Target:	Selenoprotein S (SELS)
---------	------------------------

Target Details

Alternative Name:	SELS (SELS Products)
Background:	Full Gene Name: selenoprotein S Synonyms: AD-015,ADO15,MGC104346,MGC2553,SBBI8,SEPS1,VIMP
Gene ID:	55829
Pathways:	Cellular Response to Molecule of Bacterial Origin , ER-Nucleus Signaling , Regulation of Carbohydrate Metabolic Process , Cell RedoxHomeostasis , Negative Regulation of intrinsic apoptotic Signaling , SARS-CoV-2 Protein Interactome

Application Details

Application Notes:	Optimal working dilution should be determined by the investigator.
Comment:	Preparation method: in vitro, wheat germ expression system Product Quality tested by: 12.5% SDS-PAGE Stained with Coomassie Blue.
Restrictions:	For Research Use only

Handling

Buffer:	50 mM Tris-HCl, 10 mM reduced Glutathione, pH =8.0 in the elution buffer.
Handling Advice:	Aliquot to avoid repeated freezing and thawing.
Storage:	-80 °C
Storage Comment:	Best use within three months from the date of receipt of this protein.

Images

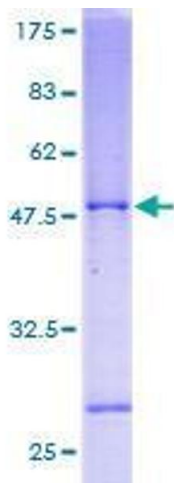


Image 1.