

Datasheet for ABIN1319463

SEMA3C Protein (AA 653-751) (GST tag)[Go to Product page](#)**1** Image

Overview

Quantity:	10 µg
Target:	SEMA3C
Protein Characteristics:	AA 653-751
Origin:	Human
Source:	Wheat germ
Protein Type:	Recombinant
Purification tag / Conjugate:	This SEMA3C protein is labelled with GST tag.
Application:	Western Blotting (WB), ELISA, Affinity Purification (AP), Antibody Array (AA)

Product Details

Purpose:	SEMA3C (Human) Recombinant Protein (Q01)
Sequence:	TIAKINFKVL DSEMVAVVTD KWSPWTWASS VRALPFHPKD IMGAFSHSEM QMINQYCKDT RQQHQQGDES QKMRGDYGKL KALINSRKSR NRRNQLPES
Characteristics:	Human SEMA3C partial ORF (NP_006370, 653 a.a. - 751 a.a.) recombinant protein with GST-tag at N-terminal.
Purification:	in vitro wheat germ expression system

Target Details

Target:	SEMA3C
Alternative Name:	SEMA3C (SEMA3C Products)

Target Details

Background: Full Gene Name: sema domain, immunoglobulin domain (Ig), short basic domain, secreted, (semaphorin) 3C
Synonyms: SEMAE,SemE

Gene ID: 10512

NCBI Accession: [NM_006379](#)

Application Details

Application Notes: Optimal working dilution should be determined by the investigator.

Comment: Preparation method: in vitro, wheat germ expression system
Product Quality tested by: 12.5% SDS-PAGE Stained with Coomassie Blue.

Restrictions: For Research Use only

Handling

Buffer: 50 mM Tris-HCl, 10 mM reduced Glutathione, pH =8.0 in the elution buffer.

Handling Advice: Aliquot to avoid repeated freezing and thawing.

Storage: -80 °C

Storage Comment: Best use within three months from the date of receipt of this protein.

Images

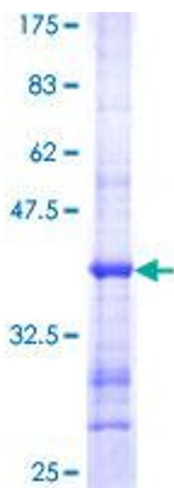


Image 1.