

Datasheet for ABIN1319474

## SEMA4B Protein (AA 592-689) (GST tag)



[Go to Product page](#)

### 1 Image

#### Overview

|                               |   |
|-------------------------------|---|
| Quantity:                     | 10 µg   |
| Target:                       | SEMA4B  |
| Protein Characteristics:      | AA 592-689  |
| Origin:                       | Human   |
| Source:                       | Wheat germ  |
| Protein Type:                 | Recombinant   |
| Purification tag / Conjugate: | This SEMA4B protein is labelled with GST tag.                                 |
| Application:                  | Western Blotting (WB), ELISA, Affinity Purification (AP), Antibody Array (AA) |

#### Product Details

|                  |  |
|------------------|--|
| Purpose:         | SEMA4B (Human) Recombinant Protein (Q01)   |
| Sequence:        | GEKPCEQVQF QPNTVNTLAC PLLSNLATRL WLRNGAPVNA SASCHVLPTG DLLLVTGQQL<br>GEFQCWSLEE GFQQLVASYS PEVVEDGVAD QTDEGGSV |
| Characteristics: | Human SEMA4B partial ORF ( NP_064595, 592 a.a. - 689 a.a.) recombinant protein with GST-tag at N-terminal.     |
| Purification:    | in vitro wheat germ expression system  |

#### Target Details

|                   |  |
|-------------------|--|
| Target:           | SEMA4B                                     |
| Alternative Name: | SEMA4B ( <a href="#">SEMA4B Products</a> ) |

## Target Details

---

Background: Full Gene Name: sema domain, immunoglobulin domain (Ig), transmembrane domain (TM) and short cytoplasmic domain, (semaphorin) 4B  
Synonyms: KIAA1745,MGC131831,SEM4C,SemC

---

Gene ID: 10509

---

NCBI Accession: [NM\\_020210](#)

---

## Application Details

---

Application Notes: Optimal working dilution should be determined by the investigator.

---

Comment: Preparation method: in vitro, wheat germ expression system  
Product Quality tested by: 12.5% SDS-PAGE Stained with Coomassie Blue.

---

Restrictions: For Research Use only

---

## Handling

---

Buffer: 50 mM Tris-HCl, 10 mM reduced Glutathione, pH =8.0 in the elution buffer.

---

Handling Advice: Aliquot to avoid repeated freezing and thawing.

---

Storage: -80 °C

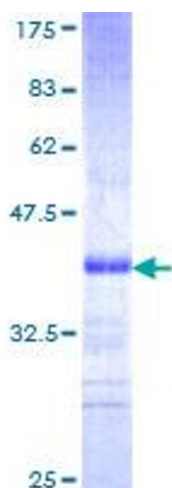
---

Storage Comment: Best use within three months from the date of receipt of this protein.

---

## Images

---



**Image 1.**