

Datasheet for ABIN1319486  
**SEMA4G Protein (AA 24-115) (GST tag)**



[Go to Product page](#)

1 Image

Overview

Quantity:	10 µg
Target:	SEMA4G
Protein Characteristics:	AA 24-115
Origin:	Human
Source:	Wheat germ
Protein Type:	Recombinant
Purification tag / Conjugate:	This SEMA4G protein is labelled with GST tag.
Application:	ELISA, Western Blotting (WB), Affinity Purification (AP), Antibody Array (AA)

Product Details

Purpose:	SEMA4G (Human) Recombinant Protein (Q01)
Sequence:	RRPSRELDAT PRMTIPYEEL SGTRHFKGQA QNYSTLLLEE ASARLLVGAR GALFSL SAND IGDGAHKEIH WEASPEMQSK CHQKGKNNQT EC
Characteristics:	Human SEMA4G partial ORF ( NP_060363, 24 a.a. - 115 a.a.) recombinant protein with GST-tag at N-terminal.
Purification:	in vitro wheat germ expression system

Target Details

Target:	SEMA4G
Alternative Name:	SEMA4G ( <a href="#">SEMA4G Products</a> )

## Target Details

---

Background:	Full Gene Name: sema domain, immunoglobulin domain (Ig), transmembrane domain (TM) and short cytoplasmic domain, (semaphorin) 4G Synonyms: FLJ20590,KIAA1619,MGC102867
Gene ID:	57715
NCBI Accession:	<a href="#">NM_017893</a>

## Application Details

---

Application Notes:	Optimal working dilution should be determined by the investigator.
Comment:	Preparation method: in vitro, wheat germ expression system Product Quality tested by: 12.5% SDS-PAGE Stained with Coomassie Blue.
Restrictions:	For Research Use only

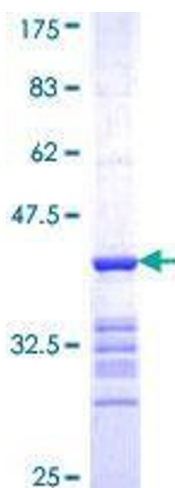
## Handling

---

Buffer:	50 mM Tris-HCl, 10 mM reduced Glutathione, pH =8.0 in the elution buffer.
Handling Advice:	Aliquot to avoid repeated freezing and thawing.
Storage:	-80 °C
Storage Comment:	Best use within three months from the date of receipt of this protein.

## Images

---



**Image 1.**