

Datasheet for ABIN1319503

SENP1 Protein (AA 544-643) (GST tag)



[Go to Product page](#)

1 Image

Overview

Quantity:	10 µg
Target:	SENP1
Protein Characteristics:	AA 544-643
Origin:	Human
Source:	Wheat germ
Protein Type:	Recombinant
Purification tag / Conjugate:	This SENP1 protein is labelled with GST tag.
Application:	ELISA, Western Blotting (WB), Affinity Purification (AP), Antibody Array (AA)

Product Details

Purpose:	SENP1 (Human) Recombinant Protein (Q01)
Sequence:	KNITYYDSMG GINNEACRIL LQYLKQESID KKRKEFD TNG WQLFSKKSQI PQQMNGSDCG MFACKYADCI TKDRPINFTQ QHMPYFRKRM VWEILHRKLL
Characteristics:	Human SENP1 partial ORF (NP_055369, 544 a.a. - 643 a.a.) recombinant protein with GST-tag at N-terminal.
Purification:	in vitro wheat germ expression system

Target Details

Target:	SENP1
Alternative Name:	SENP1 (SENP1 Products)

Target Details

Background:	Full Gene Name: SUMO1/sentrin specific peptidase 1 Synonyms: SuPr-2
Gene ID:	29843
NCBI Accession:	NM_014554
Pathways:	Positive Regulation of Endopeptidase Activity

Application Details

Application Notes:	Optimal working dilution should be determined by the investigator.
Comment:	Preparation method: in vitro, wheat germ expression system Product Quality tested by: 12.5% SDS-PAGE Stained with Coomassie Blue.
Restrictions:	For Research Use only

Handling

Buffer:	50 mM Tris-HCl, 10 mM reduced Glutathione, pH =8.0 in the elution buffer.
Handling Advice:	Aliquot to avoid repeated freezing and thawing.
Storage:	-80 °C
Storage Comment:	Best use within three months from the date of receipt of this protein.

Images

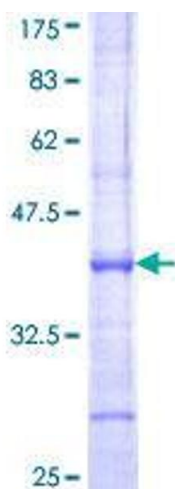


Image 1.