

Datasheet for ABIN1319505

SENP3 Protein (AA 301-400) (GST tag)



[Go to Product page](#)

1 Image

Overview

Quantity:	2 µg
Target:	SENP3
Protein Characteristics:	AA 301-400
Origin:	Human
Source:	Wheat germ
Protein Type:	Recombinant
Purification tag / Conjugate:	This SENP3 protein is labelled with GST tag.
Application:	ELISA, Western Blotting (WB), Affinity Purification (AP), Antibody Array (AA)

Product Details

Purpose:	SENP3 (Human) Recombinant Protein (Q01)
Sequence:	EKAGQHSPRLR EEHVTCVQSI LDEFLQTYGS LIPLSTDEVV EKLEDIFQQE FSTPSRKGLV LQLIQSYQRM PGNAMVRGFR VAYKRHVLTM DDLGTLYGQN
Characteristics:	Human SENP3 partial ORF (NP_056485, 301 a.a. - 400 a.a.) recombinant protein with GST-tag at N-terminal.
Purification:	in vitro wheat germ expression system

Target Details

Target:	SENP3
Alternative Name:	SENP3 (SENP3 Products)

Target Details

Background:	Full Gene Name: SUMO1/sentrin/SMT3 specific peptidase 3 Synonyms: DKFZp586K0919,DKFZp762A152,SMT3IP1,SSP3
Gene ID:	26168
NCBI Accession:	NM_015670

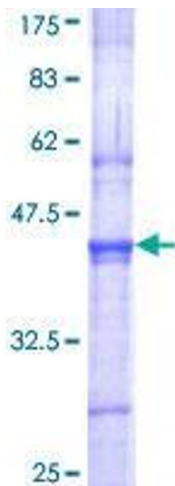
Application Details

Application Notes:	Optimal working dilution should be determined by the investigator.
Comment:	Preparation method: in vitro, wheat germ expression system Product Quality tested by: 12.5% SDS-PAGE Stained with Coomassie Blue.
Restrictions:	For Research Use only

Handling

Buffer:	50 mM Tris-HCl, 10 mM reduced Glutathione, pH =8.0 in the elution buffer.
Handling Advice:	Aliquot to avoid repeated freezing and thawing.
Storage:	-80 °C
Storage Comment:	Best use within three months from the date of receipt of this protein.

Images



SDS-PAGE

Image 1.