

Datasheet for ABIN1319514
SENP8 Protein (AA 1-212) (GST tag)



[Go to Product page](#)

1 Image

Overview

Quantity:	10 µg
Target:	SENP8
Protein Characteristics:	AA 1-212
Origin:	Human
Source:	Wheat germ
Protein Type:	Recombinant
Purification tag / Conjugate:	This SENP8 protein is labelled with GST tag.
Application:	ELISA, Western Blotting (WB), Affinity Purification (AP), Antibody Array (AA)

Product Details

Purpose:	SENP8 (Human) Recombinant Protein (P01)
Sequence:	MDPVVLSYMD SLLRQSDVSL LDPPSWLNDH IIGFAFEYFA NSQFHDCSDH VSFISPEVTQ FIKCTSNPAE IAMFLEPLDL PNKRVVFLAI NDNSNQAAGG THWSLLVYLQ DKNSFFHYDS HSRSNSVHAK QVAEKLEAFL GRKGDKLAFV EEKAPAQQNS YDCGMYVICN TEALCQNFFR QQTESLLQLL TPAYITKKRG EWKDLIATLA KK
Characteristics:	Human SENP8 full-length ORF (NP_660205.2, 1 a.a. - 212 a.a.) recombinant protein with GST-tag at N-terminal.
Purification:	in vitro wheat germ expression system

Target Details

Target:	SENP8
---------	-------

Target Details

Alternative Name:	SEN8 (SEN8 Products)
Background:	Full Gene Name: SUMO/sentrin specific peptidase family member 8 Synonyms: DEN1,HsT17512,NEDP1,PRSC2
Gene ID:	123228
NCBI Accession:	NM_145204

Application Details

Application Notes:	Optimal working dilution should be determined by the investigator.
Comment:	Preparation method: in vitro, wheat germ expression system Product Quality tested by: 12.5% SDS-PAGE Stained with Coomassie Blue.
Restrictions:	For Research Use only

Handling

Buffer:	50 mM Tris-HCl, 10 mM reduced Glutathione, pH =8.0 in the elution buffer.
Handling Advice:	Aliquot to avoid repeated freezing and thawing.
Storage:	-80 °C
Storage Comment:	Best use within three months from the date of receipt of this protein.

Images

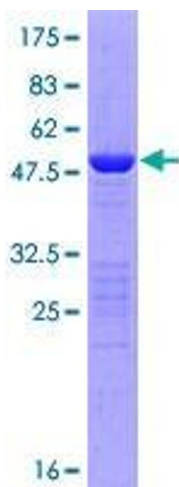


Image 1.