

Datasheet for ABIN1319544

Septin 2 Protein (SEPT2) (AA 1-371) (GST tag)



[Go to Product page](#)

1 Image

Overview

Quantity:	10 µg
Target:	Septin 2 (SEPT2)
Protein Characteristics:	AA 1-371
Origin:	Human
Source:	Wheat germ
Protein Type:	Recombinant
Purification tag / Conjugate:	This Septin 2 protein is labelled with GST tag.
Application:	ELISA, Western Blotting (WB), Affinity Purification (AP), Antibody Array (AA)

Product Details

Purpose:	SEPT2 (Human) Recombinant Protein (P02)
Sequence:	MSKQQPTQFI NPETPGYVGF ANLPNQVHRK SVKKGFEFTL MVVGESGLGK STLINSLFLT DLYPERVIPG AAALNTRKTL LWEKIERTVQ IEASTVEIEE RGVKLRRLTVV DTPGYGDAIN CRDCFKTIIS YIDEQFERYL HDESGLNRRH IIDNRVHCCF YFISPFHGHL KPLDVAFMKA IHNKNIVPV IAKADTLTLK ERERLKKRIL DEIEEHNIKI YHLPDAESDE DEDFKEQTRL LKASIPFSVV GSNQLIEAKG KKVRGRLYPW GVVEVENPEH NDFLKLRTML ITHMQDLQEV TQDLHYENFR SERLKRGGGRK VENEDMNKDQ ILLEKEAELR RMQEMIARMQ AQMQMQMQGG DGDGGALGHH V
Characteristics:	Human SEPT2 full-length ORF (AAH33559, 1 a.a. - 371 a.a.) recombinant protein with GST-tag at N-terminal.
Purification:	in vitro wheat germ expression system

Target Details

Target:	Septin 2 (SEPT2)
Alternative Name:	SEPT2 (SEPT2 Products)
Background:	Full Gene Name: septin 2 Synonyms: DIFF6,KIAA0158,NEDD5,Pnutl3,hNedd5
Gene ID:	4735

Application Details

Application Notes:	Optimal working dilution should be determined by the investigator.
Comment:	Preparation method: in vitro, wheat germ expression system Product Quality tested by: 12.5% SDS-PAGE Stained with Coomassie Blue.
Restrictions:	For Research Use only

Handling

Buffer:	50 mM Tris-HCl, 10 mM reduced Glutathione, pH =8.0 in the elution buffer.
Handling Advice:	Aliquot to avoid repeated freezing and thawing.
Storage:	-80 °C
Storage Comment:	Best use within three months from the date of receipt of this protein.

Images

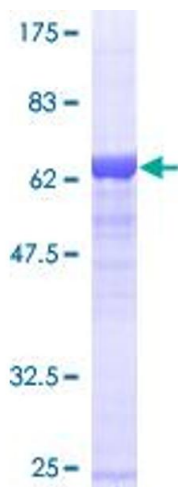


Image 1.