



[Go to Product page](#)

Datasheet for ABIN1319546

Septin 3 Protein (SEPT3) (AA 236-345) (GST tag)

1 Image

Overview

Quantity:	10 µg
Target:	Septin 3 (SEPT3)
Protein Characteristics:	AA 236-345
Origin:	Human
Source:	Wheat germ
Protein Type:	Recombinant
Purification tag / Conjugate:	This Septin 3 protein is labelled with GST tag.
Application:	Western Blotting (WB), ELISA, Affinity Purification (AP), Antibody Array (AA)

Product Details

Purpose:	SEPT3 (Human) Recombinant Protein (Q01)
Sequence:	TENDKIRQES MPFAVVGSDK EYQVNGKRVL GRKTPWGIIE VENLNHCEFA LLRDFVIRTH LQDLKEVTHN IHYETYRAKR LNDNGGLPPG ELLGLTVLPP VPATPCPTAE
Characteristics:	Human SEPT3 partial ORF (NP_663786, 236 a.a. - 345 a.a.) recombinant protein with GST-tag at N-terminal.
Purification:	in vitro wheat germ expression system

Target Details

Target:	Septin 3 (SEPT3)
Alternative Name:	SEPT3 (SEPT3 Products)

Target Details

Background:	Full Gene Name: septin 3 Synonyms: MGC133218,SEP3,bK250D10.3
Gene ID:	55964
NCBI Accession:	NM_145733
Pathways:	Negative Regulation of intrinsic apoptotic Signaling

Application Details

Application Notes:	Optimal working dilution should be determined by the investigator.
Comment:	Preparation method: in vitro, wheat germ expression system Product Quality tested by: 12.5% SDS-PAGE Stained with Coomassie Blue.
Restrictions:	For Research Use only

Handling

Buffer:	50 mM Tris-HCl, 10 mM reduced Glutathione, pH =8.0 in the elution buffer.
Handling Advice:	Aliquot to avoid repeated freezing and thawing.
Storage:	-80 °C
Storage Comment:	Best use within three months from the date of receipt of this protein.

Images

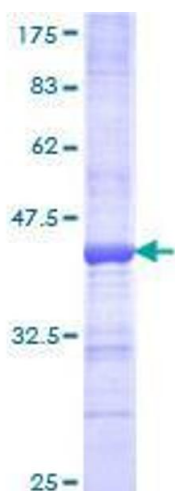


Image 1.