



[Go to Product page](#)

Datasheet for ABIN1319548

Septin 4 Protein (SEPT4) (AA 1-478) (GST tag)

1 Image

Overview

Quantity:	10 µg
Target:	Septin 4 (SEPT4)
Protein Characteristics:	AA 1-478
Origin:	Human
Source:	Wheat germ
Protein Type:	Recombinant
Purification tag / Conjugate:	This Septin 4 protein is labelled with GST tag.
Application:	ELISA, Western Blotting (WB), Affinity Purification (AP), Antibody Array (AA)

Product Details

Purpose:	SEPT4 (Human) Recombinant Protein (P01)
Sequence:	<p>MDRSLGWQGN SVPEDRTEAG IKRFLEDTTD DGELSKFVKD FSGNASCHPP EAKTWASRPQ VPEPRPQAPD LYDDDLEFRP PSRPQSSDNQ QYFCAPAPLS PSARPRSPWG KLDPYDSSSED DKEYVGFATL PNQVHRKSVK KGFDFTLMVA GESGLGKSTL VNSLFLTDLY RDRKLLGAEE RIMQTVEITK HAVDIEEKGV RLRLTIVDTP GFGDAVNNTD CWKPVAEYID QQFEQYFRDE SGLNRKNIQD NRVHCCLYFI SPFGHGLRPL DVEFMKALHQ RVNIVPILAK ADTLTPPEVD HKKRKIREEI EHFGIKIYQF PDCDSDEDED FKLQDQALKE SIPFAVIGSN TVVEARGRRV RGRLYPWGIV EVENPGHCDF VKLRTMLVRT HMQDLKDVTR ETHYENYRAQ CIQSMTRLVV KERNRNKLTR ESGTDFPIPA VPPGTDPETE KLIREKDEEL RRMQEMLHKI QKQMKENY</p>
Characteristics:	Human SEPT4 full-length ORF (NP_004565.1, 1 a.a. - 478 a.a.) recombinant protein with GST-tag at N-terminal.

Product Details

Purification: in vitro wheat germ expression system

Target Details

Target: Septin 4 (SEPT4)

Alternative Name: SEPT4 ([SEPT4 Products](#))

Background: Full Gene Name: septin 4
Synonyms: ARTS,BRADEION,CE5B3,H5,MART,PNUTL2,SEP4,hCDCREL-2,hucep-7

Gene ID: 5414

NCBI Accession: [NM_004574](#)

Application Details

Application Notes: Optimal working dilution should be determined by the investigator.

Comment: Preparation method: in vitro, wheat germ expression system
Product Quality tested by: 12.5% SDS-PAGE Stained with Coomassie Blue.

Restrictions: For Research Use only

Handling

Buffer: 50 mM Tris-HCl, 10 mM reduced Glutathione, pH =8.0 in the elution buffer.

Handling Advice: Aliquot to avoid repeated freezing and thawing.

Storage: -80 °C

Storage Comment: Best use within three months from the date of receipt of this protein.

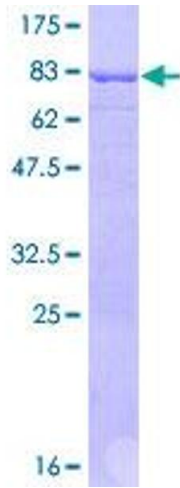


Image 1.