



[Go to Product page](#)

Datasheet for ABIN1319583

SERINC1 Protein (AA 1-453) (GST tag)

1 Image

Overview

Quantity:	25 µg
Target:	SERINC1
Protein Characteristics:	AA 1-453
Origin:	Human
Source:	Wheat germ
Protein Type:	Recombinant
Purification tag / Conjugate:	This SERINC1 protein is labelled with GST tag.
Application:	ELISA, Western Blotting (WB), Affinity Purification (AP), Antibody Array (AA)

Product Details

Purpose:	SERINC1 (Human) Recombinant Protein (P01)
Sequence:	MGSVLGLCSM ASWIPCLCGS APCLLCRCCP SGNNSTVTRL IYALFLLVGV CVACVMLIPG MEEQLNKIPG FCENEKGVVP CNILVGKAV YRLCFGLAMF YLLLSLLMIK VKSSSDPRAA VHNGFWFFKF AAAIAIIGA FFIPEGTFTT VWFYVGMAGA FCFILQLVL LIDFAHSWNE SWVEKMEEGN SRCWYAALLS ATALNYLLSL VAIVLFFVYY THPASCSENK AFISVNMLLC VGASVMSILP KIQESQPRSG LLQSSVITVY TMYLTWSAMT NEPETNCNPS LLSIIGYNTT STVPKEGQSV QWWHAQGIIG LILFLLCVFY SSIRTSNNSQ VNKLTLTSDE STLIEDGGAR SDGSLEDGDD VHRAVDNERD GVTYSYSFFH FMLFLASLYI MMTLTNWYRY EPSREMKSQW TAVWVKISSS WIGIVLYVWT LVAPLVLTNR DFD
Characteristics:	Human SERINC1 full-length ORF (NP_065806.1, 1 a.a. - 453 a.a.) recombinant protein with GST-tag at N-terminal.

Product Details

Purification: in vitro wheat germ expression system

Target Details

Target: SERINC1

Alternative Name: SERINC1 ([SERINC1 Products](#))

Background: Full Gene Name: serine incorporator 1
Synonyms: KIAA1253,TDE1L,TDE2,TMS-2

Gene ID: 57515

NCBI Accession: [NM_020755](#)

Application Details

Application Notes: Optimal working dilution should be determined by the investigator.

Comment: Preparation method: in vitro, wheat germ expression system
Product Quality tested by: 12.5% SDS-PAGE Stained with Coomassie Blue.

Restrictions: For Research Use only

Handling

Buffer: 50 mM Tris-HCl, 10 mM reduced Glutathione, pH =8.0 in the elution buffer.

Handling Advice: Aliquot to avoid repeated freezing and thawing.

Storage: -80 °C

Storage Comment: Best use within three months from the date of receipt of this protein.

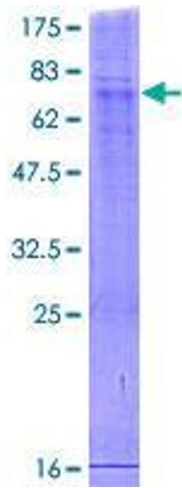


Image 1.