

Datasheet for ABIN1319596

SERPINA4 Protein (AA 1-427) (GST tag)



[Go to Product page](#)

1 Image

Overview

Quantity:	10 µg
Target:	SERPINA4
Protein Characteristics:	AA 1-427
Origin:	Human
Source:	Wheat germ
Protein Type:	Recombinant
Purification tag / Conjugate:	This SERPINA4 protein is labelled with GST tag.
Application:	Western Blotting (WB), ELISA, Affinity Purification (AP), Antibody Array (AA)

Product Details

Purpose:	SERPINA4 (Human) Recombinant Protein (P01)
Sequence:	MHLIDYLLLL LVGLLALSHG QLHVEHDGES CSNSSHQIL ETGEGSPSLK IAPANADFAF RFYYLIASET PGKNIFFSPL SISAAAYMLS LGACSHRSRQ ILEGLGFNLT ELSESDVHRG FQHLLHTLNL PGHGLETRVG SALFLSHNLK FLAKFLNDTM AVYEAKLFHT NFYDVTGTIQ LINDHVKKET RGKIVDLVSE LKKDVLMLV NYIYFKALWE KPFISSRTTP KDFYVDENTT VRVPMMLQDQ EHHWYLH DRY LPCSVLRMDY KGDATVFFIL PNQGMREIE EVLTPEMLMR WNNLLRKRNF YKKLELHLPK FSISGSYVLD QILPRLGFTD LFSKWADLSG ITKQQKLEAS KSFHKATLDV DEAGTEAAAA TSFAIKFFSA QTNRHILRFN RPFLVVFST STQSVLFLGK VDPDKP
Characteristics:	Human SERPINA4 full-length ORF (NP_006206.2, 1 a.a. - 427 a.a.) recombinant protein with GST-tag at N-terminal.
Purification:	in vitro wheat germ expression system

Target Details

Target:	SERPINA4
Alternative Name:	SERPINA4 (SERPINA4 Products)
Background:	Full Gene Name: serpin peptidase inhibitor, clade A (alpha-1 antiproteinase, antitrypsin), member 4 Synonyms: KAL,KLST,KST,PI4,kallistatin
Gene ID:	5267
NCBI Accession:	NM_006215

Application Details

Application Notes:	Optimal working dilution should be determined by the investigator.
Comment:	Preparation method: in vitro, wheat germ expression system Product Quality tested by: 12.5% SDS-PAGE Stained with Coomassie Blue.
Restrictions:	For Research Use only

Handling

Buffer:	50 mM Tris-HCl, 10 mM reduced Glutathione, pH =8.0 in the elution buffer.
Handling Advice:	Aliquot to avoid repeated freezing and thawing.
Storage:	-80 °C
Storage Comment:	Best use within three months from the date of receipt of this protein.

Images

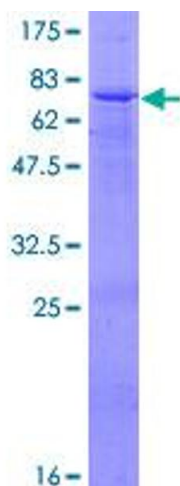


Image 1.