



[Go to Product page](#)

Datasheet for ABIN1319600

SERPINA6 Protein (AA 23-405) (GST tag)

1 Image

Overview

Quantity:	10 µg
Target:	SERPINA6
Protein Characteristics:	AA 23-405
Origin:	Human
Source:	Wheat germ
Protein Type:	Recombinant
Purification tag / Conjugate:	This SERPINA6 protein is labelled with GST tag.
Application:	Western Blotting (WB), ELISA, Affinity Purification (AP), Antibody Array (AA)

Product Details

Purpose:	SERPINA6 (Human) Recombinant Protein (P01)
Sequence:	MDPNAAYVNM SNHHRGLASA NVDFAFSLYK HLVALSPKKN IFISPVISM ALAMLSLGTG GHTRAQLLQG LGFNTERSE TEIHQGFQHL HQLFAKSDTS LEMTMGNALF LDGSLELLES FSADIKHYE SEVLAMNFQD WATASRQINS YVKNKTQGKI VDLFSGLDSP AILVLVNYIF FKGTWTQPFDF LASTREENFY VDETTVVKVP MMLQSSTISY LHDAELPCQL VQMNYVGNNGT VFFILPDKGK MNTVIAALSR DTINRWSAGL TSSQVDLYIP KVTISGVYDL GDVLEEMGIA DLFTNQANFS RITQDAQLKS SKVVHKAVLQ LNEEGVDTAG STGVTLNLTLS KPIILRFNQP FIIMIFDHFT WSSLFLARVM NPV
Characteristics:	Human SERPINA6 full-length ORF (AAH58021, 23 a.a. - 405 a.a.) recombinant protein with GST-tag at N-terminal.
Purification:	in vitro wheat germ expression system

Target Details

Target:	SERPINA6
Alternative Name:	SERPINA6 (SERPINA6 Products)
Background:	Full Gene Name: serpin peptidase inhibitor, clade A (alpha-1 antiproteinase, antitrypsin), member 6 Synonyms: CBG
Gene ID:	866

Application Details

Application Notes:	Optimal working dilution should be determined by the investigator.
Comment:	Preparation method: in vitro, wheat germ expression system Product Quality tested by: 12.5% SDS-PAGE Stained with Coomassie Blue.
Restrictions:	For Research Use only

Handling

Buffer:	50 mM Tris-HCl, 10 mM reduced Glutathione, pH =8.0 in the elution buffer.
Handling Advice:	Aliquot to avoid repeated freezing and thawing.
Storage:	-80 °C
Storage Comment:	Best use within three months from the date of receipt of this protein.

Images

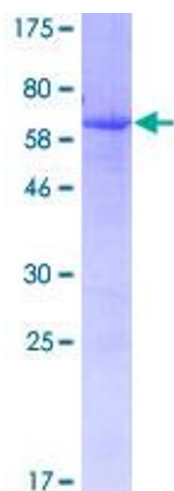


Image 1.