

Datasheet for ABIN1319608

SERPINB10 Protein (AA 1-397) (GST tag)



[Go to Product page](#)

1 Image

Overview

Quantity:	10 µg
Target:	SERPINB10
Protein Characteristics:	AA 1-397
Origin:	Human
Source:	Wheat germ
Protein Type:	Recombinant
Purification tag / Conjugate:	This SERPINB10 protein is labelled with GST tag.
Application:	ELISA, Western Blotting (WB), Affinity Purification (AP), Antibody Array (AA)

Product Details

Purpose:	SERPINB10 (Human) Recombinant Protein (P01)
Sequence:	MDSLATSINQ FALELSKKLA ESAQGKNIFF SSWSISTSILT IVYLGAKGTT AAQMAQVLQF NRDQGVKCDP ESEKRRKMEF NLSNSEEIH SDFQTLISEIL KPNDYLLKT ANAIYGEKTY AFHNKYLEDM KTYFGAEPQP VNFVEASDQI RKDINSWVER QTEGKIQLL PDDSVSTTR MILVNALYFK GIWEHQFLVQ NTTEKPFRIN ETTSKPVQMM FMKKKLHIFH IEKPKAVGLQ LYYKSRDLSL LILLPEDING LEQLEKAITY EKLNEWTSAD MMELYEVQLH LPKFKLEDSY DLKSTLSSMG MSDAFSQSKA DFSGMSSARN LFLSNVFHKA FVEINEQGTE AAAGSGSEID IRIRVPSIEF NANHPFLFFI RHNKTNTILF YGRLCSP
Characteristics:	Human SERPINB10 full-length ORF (NP_005015.1, 1 a.a. - 397 a.a.) recombinant protein with GST-tag at N-terminal.
Purification:	in vitro wheat germ expression system

Target Details

Target:	SERPINB10
Alternative Name:	SERPINB10 (SERPINB10 Products)
Background:	Full Gene Name: serpin peptidase inhibitor, clade B (ovalbumin), member 10 Synonyms: PI10,bomapin
Gene ID:	5273
NCBI Accession:	NM_005024

Application Details

Application Notes:	Optimal working dilution should be determined by the investigator.
Comment:	Preparation method: in vitro, wheat germ expression system Product Quality tested by: 12.5% SDS-PAGE Stained with Coomassie Blue.
Restrictions:	For Research Use only

Handling

Buffer:	50 mM Tris-HCl, 10 mM reduced Glutathione, pH =8.0 in the elution buffer.
Handling Advice:	Aliquot to avoid repeated freezing and thawing.
Storage:	-80 °C
Storage Comment:	Best use within three months from the date of receipt of this protein.

Images

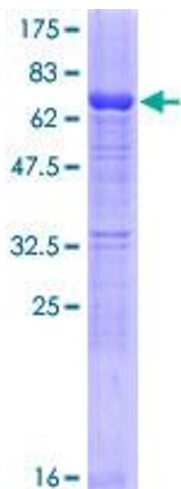


Image 1.