



[Go to Product page](#)

Datasheet for ABIN1319616

## SERPINB3 Protein (AA 1-390) (GST tag)

### 1 Image

#### Overview

|                               |   |
|-------------------------------|---|
| Quantity:                     | 10 µg   |
| Target:                       | SERPINB3  |
| Protein Characteristics:      | AA 1-390  |
| Origin:                       | Human   |
| Source:                       | Wheat germ  |
| Protein Type:                 | Recombinant   |
| Purification tag / Conjugate: | This SERPINB3 protein is labelled with GST tag.                               |
| Application:                  | Western Blotting (WB), ELISA, Affinity Purification (AP), Antibody Array (AA) |

#### Product Details

|                  |   |
|------------------|---|
| Purpose:         | SERPINB3 (Human) Recombinant Protein (P01)  |
| Sequence:        | MNSLSEANTK FMFDLFQQFR KSKENNIFYS PISITSALGM VLLGAKDNTA QQIKKVLHFD<br>QVTENTTGKA ATYHVDRSGN VHHQFQKLLT EFNKSTDAYE LKIANKLFGE KTYLFLQEYL<br>DAIKKFYQTS VESVDFANAP EESRKKINSW VESQTNEKIK NLIPEGNIGS NTTLVLVNAI<br>YFKGQWEKKF NKEDTKEEKF WPNKNTYKSI QMMRQYTSFH FASLEDVQAK VLEIPYKGD<br>LSMIVLLPNE IDGLQKLEEK LTAEKLMWT SLQNMRETRV DLHLPRFKVE ESYDLKDTLR<br>TMGMVDIFNG DADLSGMTGS RGLVLSGVLH KAFVEVTEEG AAAAAATAW GFGSSPTSTN<br>EEFHCNHPFL FFIQNKNTNS ILFYGRFSSP |
| Characteristics: | Human SERPINB3 full-length ORF ( NP_008850.1, 1 a.a. - 390 a.a.) recombinant protein with GST-tag at N-terminal.  |
| Purification:    | in vitro wheat germ expression system   |

## Target Details

|                   |   |
|-------------------|---|
| Target:           | SERPINB3  |
| Alternative Name: | SERPINB3 ( <a href="#">SERPINB3 Products</a> )  |
| Background:       | Gene: serpin peptidase inhibitor, clade B (ovalbumin), member 3<br>Synonyms: HsT1196, SCC, SCCA-1, SCCA-PD, SCCA1, T4-A |
| Gene ID:          | 6317  |
| NCBI Accession:   | <a href="#">NM_006919</a>   |

## Application Details

|                    |  |
|--------------------|--|
| Application Notes: | Optimal working dilution should be determined by the investigator. |
| Restrictions:      | For Research Use only  |

## Handling

|                  |   |
|------------------|---|
| Buffer:          | 50 mM Tris-HCl, 10 mM reduced Glutathione, pH =8.0 in the elution buffer. |
| Handling Advice: | Aliquot to avoid repeated freezing and thawing.                           |
| Storage:         | -80 °C  |
| Storage Comment: | Best use within three months from the date of receipt of this protein.    |

## Images

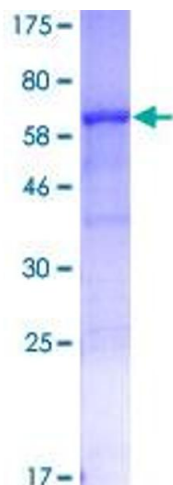


Image 1.