



[Go to Product page](#)

Datasheet for ABIN1319636

## PAI1 Protein (AA 1-402) (GST tag)

1 Image

1 Publication

### Overview

|                               |   |
|-------------------------------|---|
| Quantity:                     | 10 µg   |
| Target:                       | PAI1 (SERPINE1)   |
| Protein Characteristics:      | AA 1-402  |
| Origin:                       | Human   |
| Source:                       | Wheat germ  |
| Protein Type:                 | Recombinant   |
| Purification tag / Conjugate: | This PAI1 protein is labelled with GST tag.                                   |
| Application:                  | Western Blotting (WB), ELISA, Affinity Purification (AP), Antibody Array (AA) |

### Product Details

|                  |  |
|------------------|--|
| Purpose:         | SERPINE1 (Human) Recombinant Protein (P01)   |
| Sequence:        | <p>MQMSPALTCL VLGLALVFGE GSAVHHPPSY VAHLASDFGV RVFQQVAQAS KDRNVVFSFY<br/>GVASVLAMLQ LTTGGETQQQ IQAAMGFKID DKGMAPALRH LYKELMGPWN KDEISTTDAI<br/>FVQRDLKLVQ GFMPHFFRLF RSTVKQVDFS EVERARFIIN DWVKTHTKGM ISNLLGKGAV<br/>DQLTRLVLVN ALYFNGQWKT PFPDSSTHRR LFHKSDGSTV SVPMMMAQTNK FNYTEFTTPD<br/>GHYYDILELP YHGDTLSMFI AAPYEKEVPL SALTNILSAQ LISHWKGNMT RLPRLLVLPK<br/>FSLETEVDLR KPLENLGMTD MFRQFQADFT SLSDQEPLHV AQALQVKKIE VNESGTVASS<br/>STAVIVSARM APEEIIDRPF FVVRHNPT GTVLFMGQVM EP</p> |
| Characteristics: | Human SERPINE1 full-length ORF ( AAH10860, 1 a.a. - 402 a.a.) recombinant protein with GST-tag at N-terminal.  |
| Purification:    | in vitro wheat germ expression system  |

## Target Details

---

|                   |   |
|-------------------|---|
| Target:           | PAI1 (SERPINE1)   |
| Alternative Name: | SERPINE1 ( <a href="#">SERPINE1 Products</a> )  |
| Background:       | Full Gene Name: serpin peptidase inhibitor, clade E (nexin, plasminogen activator inhibitor type 1), member 1<br>Synonyms: PAI,PAI-1,PAI1,PLANH1  |
| Gene ID:          | 5054  |
| Pathways:         | <a href="#">p53 Signaling</a> , <a href="#">Cellular Response to Molecule of Bacterial Origin</a> , <a href="#">Carbohydrate Homeostasis</a> , <a href="#">Autophagy</a> , <a href="#">Smooth Muscle Cell Migration</a> |

## Application Details

---

|                    |  |
|--------------------|--|
| Application Notes: | Optimal working dilution should be determined by the investigator.   |
| Comment:           | Preparation method: in vitro, wheat germ expression system<br>Product Quality tested by: 12.5% SDS-PAGE Stained with Coomassie Blue. |
| Restrictions:      | For Research Use only  |

## Handling

---

|                  |   |
|------------------|---|
| Buffer:          | 50 mM Tris-HCl, 10 mM reduced Glutathione, pH =8.0 in the elution buffer. |
| Handling Advice: | Aliquot to avoid repeated freezing and thawing.                           |
| Storage:         | -80 °C  |
| Storage Comment: | Best use within three months from the date of receipt of this protein.    |

## Publications

---

|                   |  |
|-------------------|--|
| Product cited in: | Chung, Jorgensen, Tonry, Kashanchi, Bailey, Popov: "Secreted Bacillus anthracis proteases target the host fibrinolytic system." in: <b>FEMS immunology and medical microbiology</b> , Vol. 62, Issue 2, pp. 173-81, (2011) ( <a href="#">PubMed</a> ). |
|-------------------|--|

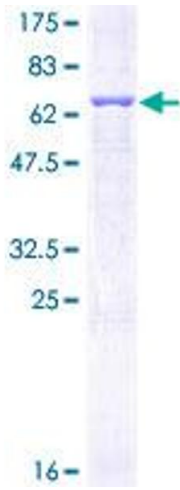


Image 1.