



[Go to Product page](#)

Datasheet for ABIN1319647

## SERPING1 Protein (AA 1-500) (GST tag)

### 1 Image

#### Overview

Quantity:	10 µg
Target:	SERPING1
Protein Characteristics:	AA 1-500
Origin:	Human
Source:	Wheat germ
Protein Type:	Recombinant
Purification tag / Conjugate:	This SERPING1 protein is labelled with GST tag.
Application:	Western Blotting (WB), ELISA, Affinity Purification (AP), Antibody Array (AA)

#### Product Details

Purpose:	SERPING1 (Human) Recombinant Protein (P01)
Sequence:	MASRLTLLTL LLLLLAGDRA SSNP NATSSS SQDPESLQDR GEGKVATTVI SKMLFVEPIL EVSSLPTTNS TTNSATKITA NTTDEPTTQP TTEPTTQPTI QPTQPTTQLP TDSPTQPTTG SFCPGPVTLC SDLESHSTEA VLGDALVDFS LKLYHAFSAM KKVETNMAFS PFSIASLLTQ VLLGAGENTK TNLESILSYK KDFTCVHQAL KGFTTKGVTS VSQIFHSPDL AIRDTFVNAS RTLYSSSPRV LSNNSDANLE LINTWVAKNT NNKISRL LDS LPSDTRLVLL NAIYLSAKWK TTFDPKTRM EPFHFKN SVI KVPMMNSK KY PVAHFIDQTL KAKVGQLQLS HNLSLVILVP QNLKHRLEDM EQALSPSVFK AIMEKLEMSK FQPTLLTLPR IKVTTSQDML SIMEKLEFFD FSYDLNLCGL TEDPDLQVSA MQHQTVLELT ETGVEAAAAS AISVARTLLV FEVQQPFLFM LWDQQHKFPV FMGRVYDPRA
Characteristics:	Human SERPING1 full-length ORF ( AAH11171, 1 a.a. - 500 a.a.) recombinant protein with GST-tag at N-terminal.

## Product Details

---

Purification: in vitro wheat germ expression system

## Target Details

---

Target: SERPING1

Alternative Name: SERPING1 ([SERPING1 Products](#))

Background: Full Gene Name: serpin peptidase inhibitor, clade G (C1 inhibitor), member 1  
Synonyms: C1IN,C1INH,C1NH,HAE1,HAE2

Gene ID: 710

Pathways: [Complement System](#)

## Application Details

---

Application Notes: Optimal working dilution should be determined by the investigator.

Comment: Preparation method: in vitro, wheat germ expression system  
Product Quality tested by: 12.5% SDS-PAGE Stained with Coomassie Blue.

Restrictions: For Research Use only

## Handling

---

Buffer: 50 mM Tris-HCl, 10 mM reduced Glutathione, pH =8.0 in the elution buffer.

Handling Advice: Aliquot to avoid repeated freezing and thawing.

Storage: -80 °C

Storage Comment: Best use within three months from the date of receipt of this protein.

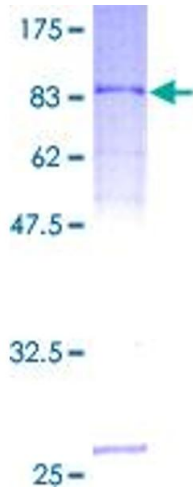


Image 1.