



[Go to Product page](#)

Datasheet for ABIN1319659

SERTAD3 Protein (AA 1-196) (GST tag)

1 Image

Overview

Quantity:	10 µg
Target:	SERTAD3
Protein Characteristics:	AA 1-196
Origin:	Human
Source:	Wheat germ
Protein Type:	Recombinant
Purification tag / Conjugate:	This SERTAD3 protein is labelled with GST tag.
Application:	ELISA, Western Blotting (WB), Affinity Purification (AP), Antibody Array (AA)

Product Details

Purpose:	SERTAD3 (Human) Recombinant Protein (P01)
Sequence:	MVGGLKRKHS DLEEEEEERWE WSPAGLQSYQ QALLRISLDK VQRSLGPRAP SLRRHVLIHN TLQQLQAALR LAPAPALPPE PLFLGEEEDFS LSATIGSILR ELDTSMGDGTE PPQNPVTPLG LQNEVPPQPD PVFLEALSSR YLGDSGLDDF FLDIDTSAVE KEPARAPPEP PHNLFCA PGS WEWNELDHIM EIILGS
Characteristics:	Human SERTAD3 full-length ORF (NP_037500.2, 1 a.a. - 196 a.a.) recombinant protein with GST-tag at N-terminal.
Purification:	in vitro wheat germ expression system

Target Details

Target:	SERTAD3
---------	---------

Target Details

Alternative Name:	SERTAD3 (SERTAD3 Products)
Background:	Full Gene Name: SERTA domain containing 3 Synonyms: RBT1
Gene ID:	29946
NCBI Accession:	NM_013368

Application Details

Application Notes:	Optimal working dilution should be determined by the investigator.
Comment:	Preparation method: in vitro, wheat germ expression system Product Quality tested by: 12.5% SDS-PAGE Stained with Coomassie Blue.
Restrictions:	For Research Use only

Handling

Buffer:	50 mM Tris-HCl, 10 mM reduced Glutathione, pH =8.0 in the elution buffer.
Handling Advice:	Aliquot to avoid repeated freezing and thawing.
Storage:	-80 °C
Storage Comment:	Best use within three months from the date of receipt of this protein.

Images

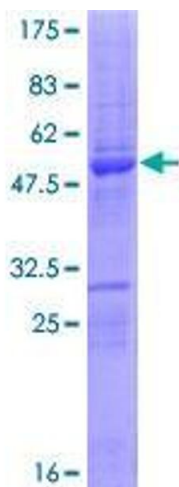


Image 1.