



[Go to Product page](#)

Datasheet for ABIN1319671

## SESTD1 Protein (AA 1-696) (GST tag)

### 1 Image

#### Overview

Quantity:	10 µg
Target:	SESTD1
Protein Characteristics:	AA 1-696
Origin:	Human
Source:	Wheat germ
Protein Type:	Recombinant
Purification tag / Conjugate:	This SESTD1 protein is labelled with GST tag.
Application:	ELISA, Western Blotting (WB), Affinity Purification (AP), Antibody Array (AA)

#### Product Details

Purpose:	SESTD1 (Human) Recombinant Protein (P01)
Sequence:	MEASVILPIL KKKLAFLSGG KRRRSLILT IPLCLEQTNM DELSVTLDFL LSIPSEKCKA RGFTVIVDGR KSQWNVVKTV VMLQNVVPA EVSLVCVVKP DEFWDKKVTH FCFWKEKDRL GFEVILVSAN KLTRYIEPCQ LTEDFGGSLT YDHMDWLNKR LVFEKFTKES TSLDELALI NNGSDKGNQQ EKERSVDLNF LPSVDPETVL QTGHELLSEL QRRFNGSDG GVSWSMDDDE LLAQPQVMKL LDSLREQYTR YQEVCRQRSK RTQLEEIQQK VMQVVNWLEG PGSEQLRAQW GIGDSIRASQ ALQQKHEEIE SQHSEWFAVY VELNQQIAAL LNAGDEEDLV ELKSLQQQLS DVCYRQASQL EFRQNLLQAA LEFHGVAQDL SQQLDGLLGM LCVDVAPADG ASIQQTLKLL EEKLKSVDVG LQGLREKGQG LLDQISNQAS WAYGKDVITIE NKENVDHIIQG VMEDMQLRKQ RCEDMVDVRR LKMLQMVQLF KCEEDAAQAV EWLSELLDAL LKTHIRLGDD AQETKVLLEK HRKFVDVAQS TYDYGRQLLQ ATVVLQCQLR CTSRSSGDTL PRLNRVWKQF TIASEERVHR LEMAIAFHSN AEKILQDCPE EPEAINDEEQ FDEIEAVGKS LLDRLTVPVY YPDGTEQYFG

## Product Details

---

SPSDMASTAE NIRDRMKLVN LKRQQLRHPE MVTTES

Characteristics:	Human SESTD1 full-length ORF ( AAH47578.1, 1 a.a. - 696 a.a.) recombinant protein with GST-tag at N-terminal.
Purification:	in vitro wheat germ expression system

## Target Details

---

Target:	SESTD1
Alternative Name:	SESTD1 ( <a href="#">SESTD1 Products</a> )
Background:	Full Gene Name: SEC14 and spectrin domains 1 Synonyms: DKFZp43400515,SOLO
Gene ID:	91404

## Application Details

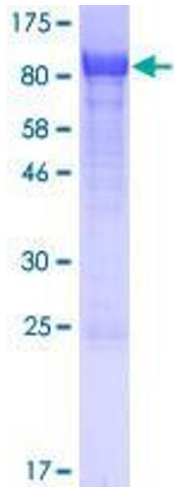
---

Application Notes:	Optimal working dilution should be determined by the investigator.
Comment:	Preparation method: in vitro, wheat germ expression system Product Quality tested by: 12.5% SDS-PAGE Stained with Coomassie Blue.
Restrictions:	For Research Use only

## Handling

---

Buffer:	50 mM Tris-HCl, 10 mM reduced Glutathione, pH =8.0 in the elution buffer.
Handling Advice:	Aliquot to avoid repeated freezing and thawing.
Storage:	-80 °C
Storage Comment:	Best use within three months from the date of receipt of this protein.



**Image 1.**