



[Go to Product page](#)

Datasheet for ABIN1319691

SETMAR Protein (AA 1-352) (GST tag)

1 Image

Overview

Quantity:	10 µg
Target:	SETMAR
Protein Characteristics:	AA 1-352
Origin:	Human
Source:	Wheat germ
Protein Type:	Recombinant
Purification tag / Conjugate:	This SETMAR protein is labelled with GST tag.
Application:	ELISA, Western Blotting (WB), Affinity Purification (AP), Antibody Array (AA)

Product Details

Purpose:	SETMAR (Human) Recombinant Protein (P01)
Sequence:	MAEFKEKPEA PTEQLDVACG QENLPVGAWP PGAAPAPFQY TPDHVVGPGA DIDPTQITFP GCICVKTPCL PGTCSCLRHG ENYDDNSCLR DIGSGGKYAE PVFECNVLCR CSDHCRNRVV QKGLQFHFQV FKTHKKGWGL RTLEFIPKGR FVCEYAGEVL GFSEVQRRIH LQTKSDSNYI IAIREHVYNG QVMETFVDPT YIGNIGRFLN HSCEPNLLMI PVRIDSMVPK LALFAAKDIV PEEELSYDYS GRYLNLTVSE DKERLDHGKL RKPCYCGAKS CTAFLPFDSS LYCPVEKSNI SCGNEKEPSM CGSAPSVFPS CKRLTLEVSL FSDKQLAPPY SGRQWLASFT SA
Characteristics:	Human SETMAR full-length ORF (AAH11635.1, 1 a.a. - 352 a.a.) recombinant protein with GST-tag at N-terminal.
Purification:	in vitro wheat germ expression system

Target Details

Target:	SETMAR
Alternative Name:	SETMAR (SETMAR Products)
Background:	Full Gene Name: SET domain and mariner transposase fusion gene Synonyms: METNASE
Gene ID:	6419
Pathways:	Positive Regulation of Response to DNA Damage Stimulus

Application Details

Application Notes:	Optimal working dilution should be determined by the investigator.
Comment:	Preparation method: in vitro, wheat germ expression system Product Quality tested by: 12.5% SDS-PAGE Stained with Coomassie Blue.
Restrictions:	For Research Use only

Handling

Buffer:	50 mM Tris-HCl, 10 mM reduced Glutathione, pH =8.0 in the elution buffer.
Handling Advice:	Aliquot to avoid repeated freezing and thawing.
Storage:	-80 °C
Storage Comment:	Best use within three months from the date of receipt of this protein.

Images

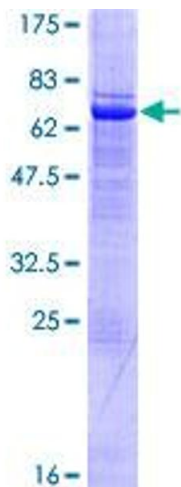


Image 1.