

Datasheet for ABIN1319700

Splicing Factor 1 Protein (SF1) (AA 1-110) (GST tag)[Go to Product page](#)**1** Image

Overview

Quantity:	10 µg
Target:	Splicing Factor 1 (SF1)
Protein Characteristics:	AA 1-110
Origin:	Human
Source:	Wheat germ
Protein Type:	Recombinant
Purification tag / Conjugate:	This Splicing Factor 1 protein is labelled with GST tag.
Application:	Western Blotting (WB), ELISA, Affinity Purification (AP), Antibody Array (AA)

Product Details

Purpose:	SF1 (Human) Recombinant Protein (Q01)
Sequence:	MATGANATPL DFPSKKRKRS RWNQDTMEQK TVIPGMPTVI PPGLTREQER AYIVQLQIED LTRKLRTGDL GIPPNPEDRS PSPEPIYNSE GKRLNTREFR TRKKLEEERH
Characteristics:	Human SF1 partial ORF (NP_004621, 1 a.a. - 110 a.a.) recombinant protein with GST-tag at N-terminal.
Purification:	in vitro wheat germ expression system

Target Details

Target:	Splicing Factor 1 (SF1)
Alternative Name:	SF1 (SF1 Products)

Target Details

Background:	Full Gene Name: splicing factor 1 Synonyms: D11S636,ZFM1,ZNF162
Gene ID:	7536
NCBI Accession:	NM_004630
Pathways:	Nuclear Receptor Transcription Pathway , Steroid Hormone Mediated Signaling Pathway , Ribonucleoprotein Complex Subunit Organization , Maintenance of Protein Location

Application Details

Application Notes:	Optimal working dilution should be determined by the investigator.
Comment:	Preparation method: in vitro, wheat germ expression system Product Quality tested by: 12.5% SDS-PAGE Stained with Coomassie Blue.
Restrictions:	For Research Use only

Handling

Buffer:	50 mM Tris-HCl, 10 mM reduced Glutathione, pH =8.0 in the elution buffer.
Handling Advice:	Aliquot to avoid repeated freezing and thawing.
Storage:	-80 °C
Storage Comment:	Best use within three months from the date of receipt of this protein.

Images

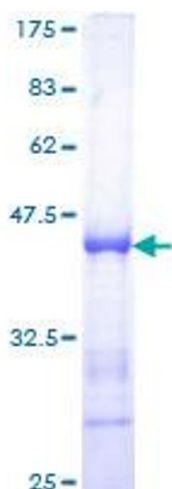


Image 1.