



[Go to Product page](#)

Datasheet for ABIN1319703

SF3A1 Protein (AA 140-227) (GST tag)

1 Image

Overview

Quantity:	10 µg
Target:	SF3A1
Protein Characteristics:	AA 140-227
Origin:	Human
Source:	Wheat germ
Protein Type:	Recombinant
Purification tag / Conjugate:	This SF3A1 protein is labelled with GST tag.
Application:	ELISA, Western Blotting (WB), Affinity Purification (AP), Antibody Array (AA)

Product Details

Purpose:	SF3A1 (Human) Recombinant Protein (Q01)
Sequence:	TIVPKPEPPE FEFIADPPSI SAFDLDVVKL TAQFVARNGR QFLTQLMQKE QRNYQDFDLR PQHSLFNFT KLVEQYTKIL IPPKGLFS
Characteristics:	Human SF3A1 partial ORF (NP_005868, 140 a.a. - 227 a.a.) recombinant protein with GST-tag at N-terminal.
Purification:	in vitro wheat germ expression system

Target Details

Target:	SF3A1
Alternative Name:	SF3A1 (SF3A1 Products)

Target Details

Background:	Full Gene Name: splicing factor 3a, subunit 1, 120 kDa Synonyms: PRP21,PRPF21,SAP114,SF3A120
Gene ID:	10291
NCBI Accession:	NM_005877
Pathways:	Ribonucleoprotein Complex Subunit Organization

Application Details

Application Notes:	Optimal working dilution should be determined by the investigator.
Comment:	Preparation method: in vitro, wheat germ expression system Product Quality tested by: 12.5% SDS-PAGE Stained with Coomassie Blue.
Restrictions:	For Research Use only

Handling

Buffer:	50 mM Tris-HCl, 10 mM reduced Glutathione, pH =8.0 in the elution buffer.
Handling Advice:	Aliquot to avoid repeated freezing and thawing.
Storage:	-80 °C
Storage Comment:	Best use within three months from the date of receipt of this protein.

Images

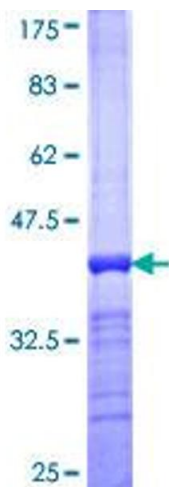


Image 1.