



[Go to Product page](#)

Datasheet for ABIN1319707

SF3A3 Protein (AA 1-501) (GST tag)

1 Image

Overview

Quantity:	10 µg
Target:	SF3A3
Protein Characteristics:	AA 1-501
Origin:	Human
Source:	Wheat germ
Protein Type:	Recombinant
Purification tag / Conjugate:	This SF3A3 protein is labelled with GST tag.
Application:	ELISA, Western Blotting (WB), Affinity Purification (AP), Antibody Array (AA)

Product Details

Purpose:	SF3A3 (Human) Recombinant Protein (P01)
Sequence:	METILEQQR YHEEKERLMD VMAKEMLTKK STLRDQINSD HRTRAMQDRY MEVSGNLRDL YDDKDGLRKE ELNAISGPNE FAEFYNRLKQ IKEFHRKHPN EICVPMSVEF EELLKAREN SEEAQNLVEF TDEEGYGRYL DLHDCYLKYI NLKASEKLDY ITYLSIFDQL FDIPKERKNA EYKRYLEMLL EYLQDYTDV KPLQDQNELF GKIQAEFK WENGTFPGWP KETSSALHTA GAHLDSLAFS SWEELASLGL DRLKSALLAL GLKCGGTLEE RAQLFSTKG KSLESLDTSL FAKNPKSKGT KRDTERNKDI AFLEAQIYEV VEILGEQRHL THENVQRKQA RTGEEREEEE EEQISESESE DEENEIYNP KNLPLGWDGK PIPYWLYKLH GLNINYNCEI CGNYTYRGPK AFQRHFAEWR HAHGMRCLGI PNTAHFANVT QIEDAVSLWA KKLKQKASER WQPDTEEEYE DSSGNVNNKK TYEDLKRQGL L
Characteristics:	Human SF3A3 full-length ORF (AAH11523.1, 1 a.a. - 501 a.a.) recombinant protein with GST-tag at N-terminal.

Product Details

Purification: in vitro wheat germ expression system

Target Details

Target: SF3A3

Alternative Name: SF3A3 ([SF3A3 Products](#))

Background: Full Gene Name: splicing factor 3a, subunit 3, 60 kDa
Synonyms: PRP9,PRPF9,SAP61,SF3a60

Gene ID: 10946

Pathways: [Ribonucleoprotein Complex Subunit Organization](#)

Application Details

Application Notes: Optimal working dilution should be determined by the investigator.

Comment: Preparation method: in vitro, wheat germ expression system
Product Quality tested by: 12.5% SDS-PAGE Stained with Coomassie Blue.

Restrictions: For Research Use only

Handling

Buffer: 50 mM Tris-HCl, 10 mM reduced Glutathione, pH =8.0 in the elution buffer.

Handling Advice: Aliquot to avoid repeated freezing and thawing.

Storage: -80 °C

Storage Comment: Best use within three months from the date of receipt of this protein.

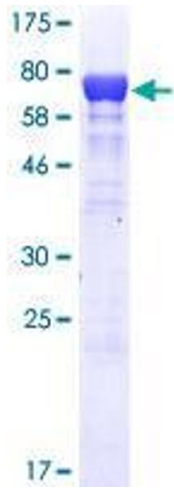


Image 1.