

Datasheet for ABIN1319723
SFI1 Protein (AA 1-209) (GST tag)



[Go to Product page](#)

1 Image

Overview

Quantity:	10 µg
Target:	SFI1
Protein Characteristics:	AA 1-209
Origin:	Human
Source:	Wheat germ
Protein Type:	Recombinant
Purification tag / Conjugate:	This SFI1 protein is labelled with GST tag.
Application:	ELISA, Western Blotting (WB), Affinity Purification (AP), Antibody Array (AA)

Product Details

Purpose:	SFI1 (Human) Recombinant Protein (P01)
Sequence:	MAQPAAPSLT RPFLAEAPTA LVPHSPLPGA LSSAPGPKQP PTASTGPELL LLPLSSFMPG GAAAPARVSA QRATPRDKPP VPSSLASVPD PHLLPGDFS ATRAGPGLST AGSLDLEAEL EEIQQLLHY QTTKQNLWSC RRQASSLRRW LELNREEPGP EDQEVEQQVQ KELEQVEMQI QLLAEELQAQ RQPIGACVAR IQALRQALC
Characteristics:	Human SFI1 full-length ORF (AAH46221.2, 1 a.a. - 209 a.a.) recombinant protein with GST-tag at N-terminal.
Purification:	in vitro wheat germ expression system

Target Details

Target:	SFI1
---------	------

Target Details

Alternative Name:	SFI1 (SFI1 Products)
Background:	Full Gene Name: Sfi1 homolog, spindle assembly associated (yeast) Synonyms: MGC131712,MGC150663,MGC156283,MGC57874,PISD,RP5-858B16.1,hSfi1p
Gene ID:	9814
Pathways:	M Phase

Application Details

Application Notes:	Optimal working dilution should be determined by the investigator.
Comment:	Preparation method: in vitro, wheat germ expression system Product Quality tested by: 12.5% SDS-PAGE Stained with Coomassie Blue.
Restrictions:	For Research Use only

Handling

Buffer:	50 mM Tris-HCl, 10 mM reduced Glutathione, pH =8.0 in the elution buffer.
Handling Advice:	Aliquot to avoid repeated freezing and thawing.
Storage:	-80 °C
Storage Comment:	Best use within three months from the date of receipt of this protein.

Images

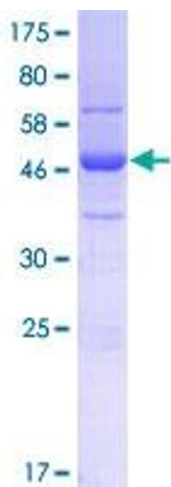


Image 1.