

Datasheet for ABIN1319733  
**SFPQ Protein (AA 269-361) (GST tag)**



[Go to Product page](#)

1 Image

Overview

Quantity:	10 µg
Target:	SFPQ
Protein Characteristics:	AA 269-361
Origin:	Human
Source:	Wheat germ
Protein Type:	Recombinant
Purification tag / Conjugate:	This SFPQ protein is labelled with GST tag.
Application:	ELISA, Western Blotting (WB), Affinity Purification (AP), Antibody Array (AA)

Product Details

Purpose:	SFPQ (Human) Recombinant Protein (Q01)
Sequence:	E EKISDSEGF KANLSLLRRP GEKTYTQRCR LFGVNLPA DI TEDEFKRLFA KYGEPGEVFI NKGKGF GFIK LESRALAEIA KAELDDTPMR GRQ
Characteristics:	Human SFPQ partial ORF ( NP_005057, 269 a.a. - 361 a.a.) recombinant protein with GST-tag at N-terminal.
Purification:	in vitro wheat germ expression system

Target Details

Target:	SFPQ
Alternative Name:	SFPQ ( <a href="#">SFPQ Products</a> )

## Target Details

Background:	Full Gene Name: splicing factor proline/glutamine-rich (polypyrimidine tract binding protein associated) Synonyms: POMP100,PSF
Gene ID:	6421
NCBI Accession:	<a href="#">NM_005066</a>

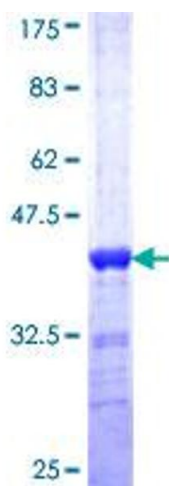
## Application Details

Application Notes:	Optimal working dilution should be determined by the investigator.
Comment:	Preparation method: in vitro, wheat germ expression system Product Quality tested by: 12.5% SDS-PAGE Stained with Coomassie Blue.
Restrictions:	For Research Use only

## Handling

Buffer:	50 mM Tris-HCl, 10 mM reduced Glutathione, pH =8.0 in the elution buffer.
Handling Advice:	Aliquot to avoid repeated freezing and thawing.
Storage:	-80 °C
Storage Comment:	Best use within three months from the date of receipt of this protein.

## Images



**Image 1.**