

Datasheet for ABIN1319749

## SFRS17A Protein (AA 1-446) (GST tag)



[Go to Product page](#)

### 1 Image

#### Overview

Quantity:	25 µg
Target:	SFRS17A (AKAP17A)
Protein Characteristics:	AA 1-446
Origin:	Human
Source:	Wheat germ
Protein Type:	Recombinant
Purification tag / Conjugate:	This SFRS17A protein is labelled with GST tag.
Application:	ELISA, Western Blotting (WB), Affinity Purification (AP), Antibody Array (AA)

#### Product Details

Purpose:	SFRS17A (Human) Recombinant Protein (P01)
Sequence:	MAAATIVHDT SEAVELCPAY GLYLKPITKM TISVALPQLK QPGKSISNWE VMERLKG MVQ NHQFSTLRIS KSTMDFIRFE GEVENKSLVK SFLACLDGKT IKLSGFSDIL KVRAAEFKID FPTRHDWDSF FRDAKDMNET LPGAERPDTHI LEGLPCKWFA LKESGSEKPS EDVLVKVFEK FGEIRNDIP MLDSYREEMT GRNFHTFSFG GHLNFEAYVQ YREYMGFIQA MSALRGMKLM YKGEDGKAVA CNIKVSFDST KHLSDASIKK RQLERQKLQE LEQQREEQKR REKEAEERQR AEERKQKELE ELERERKREE KLRKREQQQR DRELRRNQKK LEKLQAEQK QLQEKIKLEE RKLLLAQRNL QSIRLIAELL SRAKVPGGSL CSRQPRPGCP QCPLKCGRR HGAVSPPAAA VATKPALMPR MTAPSREGVA LVCRSR
Characteristics:	Human SFRS17A full-length ORF ( AAH28151, 1 a.a. - 446 a.a.) recombinant protein with GST-tag at N-terminal.

## Product Details

---

Purification: in vitro wheat germ expression system

## Target Details

---

Target: SFRS17A (AKAP17A)

Alternative Name: SFRS17A ([AKAP17A Products](#))

Background: Full Gene Name: splicing factor, arginine/serine-rich 17A  
Synonyms: 721P,CCDC133,CXYorf3,DXYS155E,MGC125365,MGC125366,MGC39904,XE7,XE7Y

Gene ID: 8227

## Application Details

---

Application Notes: Optimal working dilution should be determined by the investigator.

Comment: Preparation method: in vitro, wheat germ expression system  
Product Quality tested by: 12.5% SDS-PAGE Stained with Coomassie Blue.

Restrictions: For Research Use only

## Handling

---

Buffer: 50 mM Tris-HCl, 10 mM reduced Glutathione, pH =8.0 in the elution buffer.

Handling Advice: Aliquot to avoid repeated freezing and thawing.

Storage: -80 °C

Storage Comment: Best use within three months from the date of receipt of this protein.

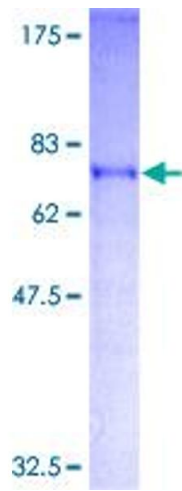


Image 1.