

Datasheet for ABIN1319750
SFRS17A Protein (AA 53-156) (GST tag)



[Go to Product page](#)

1 Image

Overview

Quantity:	10 µg
Target:	SFRS17A (AKAP17A)
Protein Characteristics:	AA 53-156
Origin:	Human
Source:	Wheat germ
Protein Type:	Recombinant
Purification tag / Conjugate:	This SFRS17A protein is labelled with GST tag.
Application:	ELISA, Western Blotting (WB), Affinity Purification (AP), Antibody Array (AA)

Product Details

Purpose:	SFRS17A (Human) Recombinant Protein (Q01)
Sequence:	ERLKG MVQNH QFSTLRISKS TMDFIRFEGE VENKSLVKSF LACLDGKTIK LSGFSDILKV RAAEFKIDFP TRHDWDSFFR DAKDMNETLP GERPDTIHLE GLPC
Characteristics:	Human SFRS17A partial ORF (NP_005079, 53 a.a. - 156 a.a.) recombinant protein with GST-tag at N-terminal.
Purification:	in vitro wheat germ expression system

Target Details

Target:	SFRS17A (AKAP17A)
Alternative Name:	SFRS17A (AKAP17A Products)

Target Details

Background:	Full Gene Name: splicing factor, arginine/serine-rich 17A Synonyms: 721P,CCDC133,CXYorf3,DXYS155E,MGC125365,MGC125366,MGC39904,XE7,XE7Y
Gene ID:	8227
NCBI Accession:	NM_005088

Application Details

Application Notes:	Optimal working dilution should be determined by the investigator.
Comment:	Preparation method: in vitro, wheat germ expression system Product Quality tested by: 12.5% SDS-PAGE Stained with Coomassie Blue.
Restrictions:	For Research Use only

Handling

Buffer:	50 mM Tris-HCl, 10 mM reduced Glutathione, pH =8.0 in the elution buffer.
Handling Advice:	Aliquot to avoid repeated freezing and thawing.
Storage:	-80 °C
Storage Comment:	Best use within three months from the date of receipt of this protein.

Images

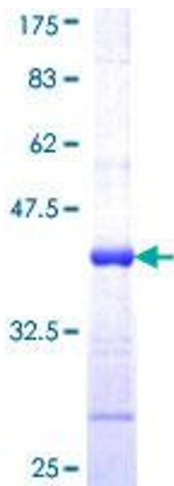


Image 1.