

Datasheet for ABIN1319756
SRSF3 Protein (AA 1-85) (GST tag)



[Go to Product page](#)

1 Image

1 Publication

Overview

Quantity:	10 µg
Target:	SRSF3
Protein Characteristics:	AA 1-85
Origin:	Human
Source:	Wheat germ
Protein Type:	Recombinant
Purification tag / Conjugate:	This SRSF3 protein is labelled with GST tag.
Application:	ELISA, Western Blotting (WB), Affinity Purification (AP), Antibody Array (AA)

Product Details

Purpose:	SFRS3 (Human) Recombinant Protein (Q01)
Sequence:	MHRDSCPLDC KVYVGNLGN GNKTELERAF GYGPLRSVW VARNPPGFAF VEFEDPRDAA DAVRELDGRT LCGCRVRVEL SNGEK
Characteristics:	Human SFRS3 partial ORF (NP_003008, 1 a.a. - 85 a.a.) recombinant protein with GST-tag at N-terminal.
Purification:	in vitro wheat germ expression system

Target Details

Target:	SRSF3
Alternative Name:	SFRS3 (SRSF3 Products)

Target Details

Background: Full Gene Name: splicing factor, arginine/serine-rich 3
Synonyms: SRp20

Gene ID: 6428

NCBI Accession: [NM_003017](#)

Application Details

Application Notes: Optimal working dilution should be determined by the investigator.

Comment: Preparation method: in vitro, wheat germ expression system
Product Quality tested by: 12.5% SDS-PAGE Stained with Coomassie Blue.

Restrictions: For Research Use only

Handling

Buffer: 50 mM Tris-HCl, 10 mM reduced Glutathione, pH =8.0 in the elution buffer.

Handling Advice: Aliquot to avoid repeated freezing and thawing.

Storage: -80 °C

Storage Comment: Best use within three months from the date of receipt of this protein.

Publications

Product cited in: Gonçalves, Matos, Jordan: "Antagonistic SR proteins regulate alternative splicing of tumor-related Rac1b downstream of the PI3-kinase and Wnt pathways." in: **Human molecular genetics**, Vol. 18, Issue 19, pp. 3696-707, (2009) ([PubMed](#)).

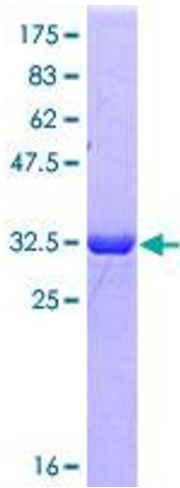


Image 1.