

Datasheet for ABIN1319762  
**SRSF5 Protein (AA 1-272) (GST tag)**



[Go to Product page](#)

1 Image

## Overview

Quantity:	10 µg
Target:	SRSF5
Protein Characteristics:	AA 1-272
Origin:	Human
Source:	Wheat germ
Protein Type:	Recombinant
Purification tag / Conjugate:	This SRSF5 protein is labelled with GST tag.
Application:	ELISA, Western Blotting (WB), Affinity Purification (AP), Antibody Array (AA)

## Product Details

Purpose:	SFRS5 (Human) Recombinant Protein (P02)
Sequence:	MSGCRVFIGR LNPAAREKDV ERFFKGYGRI RDIDLKRGFG FVEFEDPRDA DDAVYELD GK ELCSERV TIE HARARSRGGR GRGRYSDFRS SRRPRNDRRN APPVRTENRL IVENLSSRVS WQDLKDFMRQ AGEVTFADAH RPKLNEGVVE FASYGDLKNA IEKLSGKEIN GRKIKLIEGS KRHSRSRSRS RSRTRSSSRS RSRRSRSRSRK SYSRSRSRSR SRSRSKSRSV SRSPVPEKSQ KRGSSRSKSKS PASVDRQRSR SRSRSRSVDS GN
Characteristics:	Human SFRS5 full-length ORF ( NP_001034554.1, 1 a.a. - 272 a.a.) recombinant protein with GST-tag at N-terminal.
Purification:	in vitro wheat germ expression system

## Target Details

Target:	SRSF5
Alternative Name:	SFRS5 ( <a href="#">SRSF5 Products</a> )
Background:	Full Gene Name: splicing factor, arginine/serine-rich 5 Synonyms: HRS,SRP40
Gene ID:	6430
NCBI Accession:	<a href="#">NM_001039465</a>
Pathways:	<a href="#">Ribonucleoprotein Complex Subunit Organization</a>

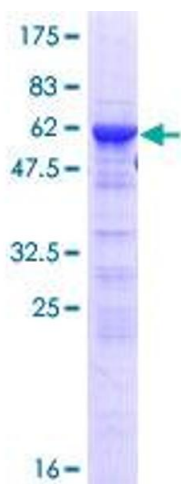
## Application Details

Application Notes:	Optimal working dilution should be determined by the investigator.
Comment:	Preparation method: in vitro, wheat germ expression system Product Quality tested by: 12.5% SDS-PAGE Stained with Coomassie Blue.
Restrictions:	For Research Use only

## Handling

Buffer:	50 mM Tris-HCl, 10 mM reduced Glutathione, pH =8.0 in the elution buffer.
Handling Advice:	Aliquot to avoid repeated freezing and thawing.
Storage:	-80 °C
Storage Comment:	Best use within three months from the date of receipt of this protein.

## Images



**Image 1.**