



[Go to Product page](#)

Datasheet for ABIN1319764

SFRS6 Protein (AA 1-344) (GST tag)

1 Image

Overview

Quantity:	10 µg
Target:	SFRS6 (SRSF6)
Protein Characteristics:	AA 1-344
Origin:	Human
Source:	Wheat germ
Protein Type:	Recombinant
Purification tag / Conjugate:	This SFRS6 protein is labelled with GST tag.
Application:	ELISA, Western Blotting (WB), Affinity Purification (AP), Antibody Array (AA)

Product Details

Purpose:	SFRS6 (Human) Recombinant Protein (P01)
Sequence:	MPRVYIGRLS YNVREKDIQR FFSGYGRLLE VDLKNGYGFV EFEDSRDADD AVYELNGKEL CGERVIVEHA RGPRRDRDGY SYGSRSGGGG YSSRRTSGRD KYGPPVRTEY RLIVENLSSR CSWQDLKDFM RQAGEVTYAD AHKERTNEGV IEFRSYSMDK RALDKLDGTE INGRNIRLIE DKPRTSHRRS YSGSRRSRS RRRSRRSRR SSRSRRSIS KRSRSRSRS KGRSRRSRSG RKSRSKSKSK PKSDRGSHSH SRSRSKDEYE KRSRSRSRS PKENGKGDIK SKRSRSRSQR SNSPLPVPPS KARSVSPPPK RATSRSRSRS RSKRSRSRS SSRD
Characteristics:	Human SFRS6 full-length ORF (NP_006266.2, 1 a.a. - 344 a.a.) recombinant protein with GST-tag at N-terminal.
Purification:	in vitro wheat germ expression system

Target Details

Target:	SFRS6 (SRSF6)
Alternative Name:	SFRS6 (SRSF6 Products)
Background:	Gene: splicing factor, arginine/serine-rich 6 Synonyms: B52, FLJ08061, MGC5045, SRP55
Gene ID:	6431
NCBI Accession:	NM_006275
Pathways:	Ribonucleoprotein Complex Subunit Organization

Application Details

Application Notes:	Optimal working dilution should be determined by the investigator.
Restrictions:	For Research Use only

Handling

Buffer:	50 mM Tris-HCl, 10 mM reduced Glutathione, pH =8.0 in the elution buffer.
Handling Advice:	Aliquot to avoid repeated freezing and thawing.
Storage:	-80 °C
Storage Comment:	Best use within three months from the date of receipt of this protein.

Images

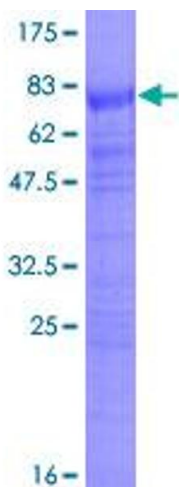


Image 1.