

Datasheet for ABIN1319776

## Surfactant Protein A1 Protein (SFTPA1) (AA 83-199) (GST tag)



[Go to Product page](#)

### 1 Image

#### Overview

Quantity:	10 µg
Target:	Surfactant Protein A1 (SFTPA1)
Protein Characteristics:	AA 83-199
Origin:	Human
Source:	Wheat germ
Protein Type:	Recombinant
Purification tag / Conjugate:	This Surfactant Protein A1 protein is labelled with GST tag.
Application:	Western Blotting (WB), ELISA, Affinity Purification (AP), Antibody Array (AA)

#### Product Details

Purpose:	SFTPA1 (Human) Recombinant Protein (P01)
Sequence:	MTVGEKVFSS NGQSITFDAL QEACARAGGR IAVPRNPEEN EAIASFVKKY NTYAYVGLTE GPSPGDFRYS DGTPVNYTNW YRGEPAGRGK EQCVEMYTDG QWNDNRNCLYS RLTICEF
Characteristics:	Human SFTPA1 full-length ORF ( NP_001158118.1, 83 a.a. - 199 a.a.) recombinant protein with GST-tag at N-terminal.
Purification:	in vitro wheat germ expression system

#### Target Details

Target:	Surfactant Protein A1 (SFTPA1)
Alternative Name:	SFTPA1 ( <a href="#">SFTPA1 Products</a> )

## Target Details

Background:	Full Gene Name: surfactant protein A1 Synonyms: COLEC4,FLJ51913,SFTP1,SP-A,SP-A1
Gene ID:	653509
NCBI Accession:	<a href="#">NM_001164646</a>

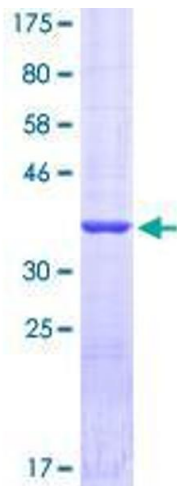
## Application Details

Application Notes:	Optimal working dilution should be determined by the investigator.
Comment:	Preparation method: in vitro, wheat germ expression system Product Quality tested by: 12.5% SDS-PAGE Stained with Coomassie Blue.
Restrictions:	For Research Use only

## Handling

Buffer:	50 mM Tris-HCl, 10 mM reduced Glutathione, pH =8.0 in the elution buffer.
Handling Advice:	Aliquot to avoid repeated freezing and thawing.
Storage:	-80 °C
Storage Comment:	Best use within three months from the date of receipt of this protein.

## Images



**Image 1.**