



[Go to Product page](#)

Datasheet for ABIN1319784

## SFXN1 Protein (AA 1-322) (GST tag)

### 1 Image

#### Overview

Quantity:	10 µg
Target:	SFXN1
Protein Characteristics:	AA 1-322
Origin:	Human
Source:	Wheat germ
Protein Type:	Recombinant
Purification tag / Conjugate:	This SFXN1 protein is labelled with GST tag.
Application:	Western Blotting (WB), ELISA, Affinity Purification (AP), Antibody Array (AA)

#### Product Details

Purpose:	SFXN1 (Human) Recombinant Protein (P01)
Sequence:	MSGELPPNIN IKEPRWDQST FIGRANHFFT VTDPRNILLT NEQLESARKI VHDYRQGIVP PGLTENELWR AKYIYDSAFH PDTGKEMILI GRMSAQVPMN MTITGCMMTF YRTTPAVLFW QWINQSFNAV VNYTNRSGDA PLTVNELGTA YVSATTGAVA TALGLNALTG HVSPLIGRFV PFAAVAAANC INIPLMRQRE LKVGIPVTDE NGNRLGESAN AAKQAITQVV VSRILMAAPG MAIPPFIMNT LEKKAFLKRF PWMSAPIQVG LVGFCLVFAT PLCCALFPQK SSMSVTSLEA ELQAKIQESH PELRRVYFNK GL
Characteristics:	Human SFXN1 full-length ORF ( NP_073591.2, 1 a.a. - 322 a.a.) recombinant protein with GST-tag at N-terminal.
Purification:	in vitro wheat germ expression system

## Target Details

Target:	SFXN1
Alternative Name:	SFXN1 ( <a href="#">SFXN1 Products</a> )
Background:	Full Gene Name: sideroflexin 1 Synonyms: FLJ12876
Gene ID:	94081
NCBI Accession:	<a href="#">NM_022754</a>
Pathways:	<a href="#">Transition Metal Ion Homeostasis</a>

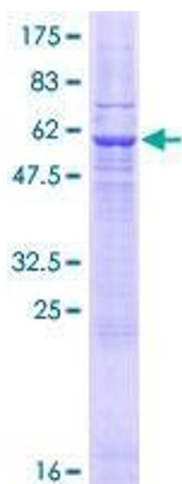
## Application Details

Application Notes:	Optimal working dilution should be determined by the investigator.
Comment:	Preparation method: in vitro, wheat germ expression system Product Quality tested by: 12.5% SDS-PAGE Stained with Coomassie Blue.
Restrictions:	For Research Use only

## Handling

Buffer:	50 mM Tris-HCl, 10 mM reduced Glutathione, pH =8.0 in the elution buffer.
Handling Advice:	Aliquot to avoid repeated freezing and thawing.
Storage:	-80 °C
Storage Comment:	Best use within three months from the date of receipt of this protein.

## Images



**Image 1.**