



[Go to Product page](#)

Datasheet for ABIN1319846

SGSH Protein (AA 1-502) (GST tag)

1 Image

Overview

Quantity:	10 µg
Target:	SGSH
Protein Characteristics:	AA 1-502
Origin:	Human
Source:	Wheat germ
Protein Type:	Recombinant
Purification tag / Conjugate:	This SGSH protein is labelled with GST tag.
Application:	Western Blotting (WB), ELISA, Antibody Array (AA), Affinity Purification (AP)

Product Details

Purpose:	SGSH (Human) Recombinant Protein (P01)
Sequence:	MSCPVPACCA LLLVLGLCRA RPRNALLLLA DDGGFESGAY NNSAIATPHL DALARRSLLF RNAFTSVSSC SPSRASLLTG LPQHQNMGMYG LHQDVHHFNS FDKVRSPLLL LSQAGVRTGI IGKKHVGPEP VYPDFAYTE ENGSVLQVGR NITRIKLLVR KFLQTQDDRP FFLYVAFHDP HRCGHSQPQY GTFCEKFGNG ESGMGRIPDW TPQAYDPLDV LVPYFVPNTP AARADLAAQY TTVGRMDQGV GLVLQELRDA GVLNDTLVIF TSDNGIPFPS GRTNLYWPGT AEPLLVSPE HPKRWGQVSE AYVSLLDLTP TILDWFSIPY PSYAIFGSKT IHLTGRSLLP ALEAEPLWAT VFGSQSHHEV TMSYPMRSVQ HRHFRLVHNL NFKMPFPIDQ DFYVSPTFQD LLNRTTAGQP TGWYKDLRHY YYRARWELYD RSRDPHETQN LATDPRFAQL LEMLRDQLAK WQWETHDPWW CAPDGVLEEK LSPQCQPLHN EL
Characteristics:	Human SGSH full-length ORF (NP_000190.1, 1 a.a. - 502 a.a.) recombinant protein with GST-tag at N-terminal.

Product Details

Purification: in vitro wheat germ expression system

Target Details

Target: SGSH

Alternative Name: SGSH ([SGSH Products](#))

Background: Full Gene Name: N-sulfoglucosamine sulfohydrolase
Synonyms: HSS,MPS3A,SFMD

Gene ID: 6448

NCBI Accession: [NM_000199](#)

Pathways: [Glycosaminoglycan Metabolic Process](#)

Application Details

Application Notes: Optimal working dilution should be determined by the investigator.

Comment: Preparation method: in vitro, wheat germ expression system
Product Quality tested by: 12.5% SDS-PAGE Stained with Coomassie Blue.

Restrictions: For Research Use only

Handling

Buffer: 50 mM Tris-HCl, 10 mM reduced Glutathione, pH =8.0 in the elution buffer.

Handling Advice: Aliquot to avoid repeated freezing and thawing.

Storage: -80 °C

Storage Comment: Best use within three months from the date of receipt of this protein.

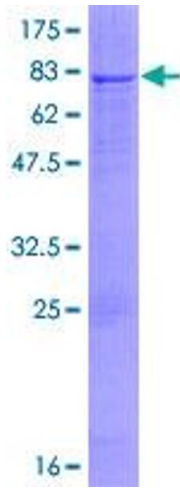


Image 1.