



[Go to Product page](#)

Datasheet for ABIN1319853

SGTB Protein (AA 1-304) (GST tag)

1 Image

Overview

Quantity:	10 µg
Target:	SGTB
Protein Characteristics:	AA 1-304
Origin:	Human
Source:	Wheat germ
Protein Type:	Recombinant
Purification tag / Conjugate:	This SGTB protein is labelled with GST tag.
Application:	ELISA, Western Blotting (WB), Affinity Purification (AP), Antibody Array (AA)

Product Details

Purpose:	SGTB (Human) Recombinant Protein (P01)
Sequence:	MSSIKHLVYA VIRFLREQSQ MDTYTSDEQE SLEVAIQCLE TVFKISPEDT HLAVSQPLTE MFTSSFCKND VLPLSNSVPE DVGKADQLKD EGNNHMKEEN YAAAVDCYTQ AIELDPNNAV YYCNRAAAQS KLGHYTDAIK DCEKAIIDS KYSKAYGRMG LALTALNKFE EAVTSYQKAL DLDPENDSYK SNLKIAEQKL REVSSPTGTG LSFDMASLIN NPAFISMAAS LMQNPQVQQL MSGMMTNAIG GPAAGVGGLT DLSSLIQAGQ QFAQQIQQN PELIEQLRNH IRSRSFSSSA EEHS
Characteristics:	Human SGTB full-length ORF (NP_061945.1, 1 a.a. - 304 a.a.) recombinant protein with GST-tag at N-terminal.
Purification:	in vitro wheat germ expression system

Target Details

Target:	SGTB
Alternative Name:	SGTB (SGTB Products)
Background:	Full Gene Name: small glutamine-rich tetratricopeptide repeat (TPR)-containing, beta Synonyms: FLJ39002,SGT2
Gene ID:	54557
NCBI Accession:	NM_019072

Application Details

Application Notes:	Optimal working dilution should be determined by the investigator.
Comment:	Preparation method: in vitro, wheat germ expression system Product Quality tested by: 12.5% SDS-PAGE Stained with Coomassie Blue.
Restrictions:	For Research Use only

Handling

Buffer:	50 mM Tris-HCl, 10 mM reduced Glutathione, pH =8.0 in the elution buffer.
Handling Advice:	Aliquot to avoid repeated freezing and thawing.
Storage:	-80 °C
Storage Comment:	Best use within three months from the date of receipt of this protein.

Images

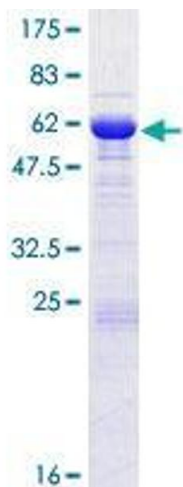


Image 1.