

Datasheet for ABIN1319855
SH2B1 Protein (AA 1-426) (GST tag)



[Go to Product page](#)

1 Image

Overview

Quantity:	10 µg
Target:	SH2B1
Protein Characteristics:	AA 1-426
Origin:	Human
Source:	Wheat germ
Protein Type:	Recombinant
Purification tag / Conjugate:	This SH2B1 protein is labelled with GST tag.
Application:	ELISA, Western Blotting (WB), Affinity Purification (AP), Antibody Array (AA)

Product Details

Purpose:	SH2B (Human) Recombinant Protein (P01)
Sequence:	MVQREELLSF MGAEEAAPDP AGVGRGGGVA GPPSGGGGQP QWQKCRLLLLR SEGEGGGGSR LEFFVPPKAS RPRLSIPCSS ITDVRTTAL EMPDRENTFV VKVEGPSEYI METVDAQHVK AWVSDIQECL SPGPCPATSP RPMTLPLAPG TSFLTRENTD SLELSCLNHS ESLPSQDLLL GPSESNDRLS QGAYGGLSDR PSASISPSSA SIAASHFDSM ELLPPELPPR IPIIEGPPAG TVHPLSAPYP PLDTPETATG SFLFQGEPEG GEGDQPLSGY PWFHGMLSRL KAAQLALTGG TGSHGVFLVR QSETRRGEYV LTFNFQGKAK HLRLSLNEEG QCRVQHLWFQ SIFDMLEHFR VHPIPLESGG SSDVVLVSIV PSSQRQQGRE QAGSHAGVCE GDGCHPDASC TLMPIFGASDC VTDHLP
Characteristics:	Human SH2B full-length ORF (AAH10704.1, 1 a.a. - 426 a.a.) recombinant protein with GST-tag at N-terminal.

Product Details

Purification: in vitro wheat germ expression system

Target Details

Target: SH2B1

Alternative Name: SH2B1 ([SH2B1 Products](#))

Background: Full Gene Name: SH2B adaptor protein 1
Synonyms: DKFZp547G11110,FLJ30542,KIAA1299,SH2-B,SH2B

Gene ID: 25970

Application Details

Application Notes: Optimal working dilution should be determined by the investigator.

Comment: Preparation method: in vitro, wheat germ expression system
Product Quality tested by: 12.5% SDS-PAGE Stained with Coomassie Blue.

Restrictions: For Research Use only

Handling

Buffer: 50 mM Tris-HCl, 10 mM reduced Glutathione, pH =8.0 in the elution buffer.

Handling Advice: Aliquot to avoid repeated freezing and thawing.

Storage: -80 °C

Storage Comment: Best use within three months from the date of receipt of this protein.

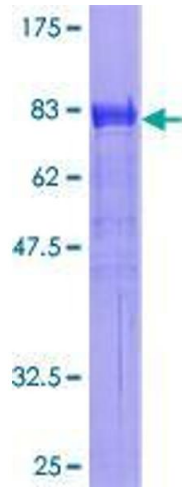


Image 1.