



[Go to Product page](#)

Datasheet for ABIN1319857

SH2B1 Protein (AA 327-426) (GST tag)

1 Image

Overview

Quantity:	10 µg
Target:	SH2B1
Protein Characteristics:	AA 327-426
Origin:	Human
Source:	Wheat germ
Protein Type:	Recombinant
Purification tag / Conjugate:	This SH2B1 protein is labelled with GST tag.
Application:	ELISA, Western Blotting (WB), Affinity Purification (AP), Antibody Array (AA)

Product Details

Purpose:	SH2B (Human) Recombinant Protein (Q01)
Sequence:	GKAKHLRLSL NEEGQCRVQH LWFQSIFDML EHFRVHPIPL ESGGSSDVVL VSYVPSSQRQ QGREQAGSHA GVCEGDGCHP DASCTLMPFG ASDCVTDHLP
Characteristics:	Human SH2B partial ORF (AAH10704, 327 a.a. - 426 a.a.) recombinant protein with GST-tag at N-terminal.
Purification:	in vitro wheat germ expression system

Target Details

Target:	SH2B1
Alternative Name:	SH2B1 (SH2B1 Products)

Target Details

Background:	Full Gene Name: SH2B adaptor protein 1 Synonyms: DKFZp547G1110,FLJ30542,KIAA1299,SH2-B,SH2B
Gene ID:	25970

Application Details

Application Notes:	Optimal working dilution should be determined by the investigator.
Comment:	Preparation method: in vitro, wheat germ expression system Product Quality tested by: 12.5% SDS-PAGE Stained with Coomassie Blue.
Restrictions:	For Research Use only

Handling

Buffer:	50 mM Tris-HCl, 10 mM reduced Glutathione, pH =8.0 in the elution buffer.
Handling Advice:	Aliquot to avoid repeated freezing and thawing.
Storage:	-80 °C
Storage Comment:	Best use within three months from the date of receipt of this protein.

Images

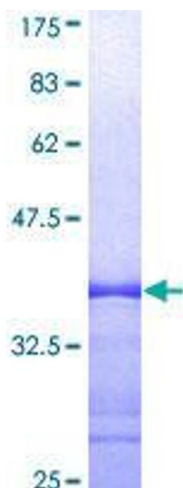


Image 1.